

FIS DEVELOPMENT ORIENTATION SESSION

FIS DEVELOPMENT AND MEMBERSHIP PROGRAMS
FOUR YEARS DIRECTION 2026 – 2030



02 April 2025



HOUSEKEEPING



SIGN IN USING NSA and LAST NAME (e.g., FIS/Muller)



MUTE YOUR MICROPHONE DURING THE SPEAKER'S PRESENTATION



TURN YOUR CAMERA ON DURING PRESENTING OR ASKING A QUESTION



SHARE QUESTIONS IN CHAT OR RAISE YOUR HAND DURING THE Q&A SESSION



THE PRESENTATION WILL BE RECORDED

FIS DEVELOPMENT ORIENTATION SESSION

AGENDA

- Opening remarks
- IOC presentation
- IPC presentation
- Development overview
- Membership overview
- Q & A
- Closing remarks

Opening FIS Development Orientation Session



FIS President
Johan Eliasch

FIS DEVELOPMENT OVERVIEW



FIS Development Overview

- ✓ Established in **1996**
- ✓ 2026 marks **30 years** of successful development initiatives
- ✓ Various development camps and coach education programs have been delivered over the years, primarily including **FIS Members** with **1 and 2 votes**
- ✓ **Record breaking season 2024/2025** signifies the need for change

IT'S TIME

The text 'IT'S TIME' is rendered in large, white, sans-serif capital letters. Each letter is filled with a different photograph of people at a winter sports event. The photos show athletes, spectators, and officials in various settings, including medal ceremonies and group photos.

FOR CHANGE

The text 'FOR CHANGE' is rendered in large, white, sans-serif capital letters. Each letter is filled with a different photograph of people at a winter sports event. The photos show athletes, spectators, and officials in various settings, including medal ceremonies and group photos.

New Directions

- ✓ **Expanding** development for all FIS members,
- ✓ **Capacity building** for NSAs and their members,
- ✓ More **sustainable, regional activities** that appeal to all FIS Members,
- ✓ **Collaboration** between **developed** and **developing NSAs** under the **FIS umbrella**.

New Activities



HAVE ACTIVITIES
FOR ALL FIS
MEMBERS



HAVE INCLUSIVE DEVELOPMENT
ACTIVITIES FOR OLYMPIC AND
PARALYMPIC PARTICIPANTS



CENTRALISED
CAMPS



REGIONAL
CLINICS



PARTNER PROGRAMS SPECIALLY
TAILORMADE FOR SPECIFIC
NEEDS OF THE FIS MEMBERS



CONTINUESLY
IMPLEMENTING NEW
ACTIVITIES LOOKING INTO
THE 10+ YEARS AND FIS
STRATEGIC PLAN

New Improvements



ENSURING INTEGRITY
AND ATHLETES
WELLBEING AT ALL FIS
DEVELOPMENT
ACTIVITIES



CONTINUES AND
IMPROVED
COMMUNICATION, e.g.
development orientation
session



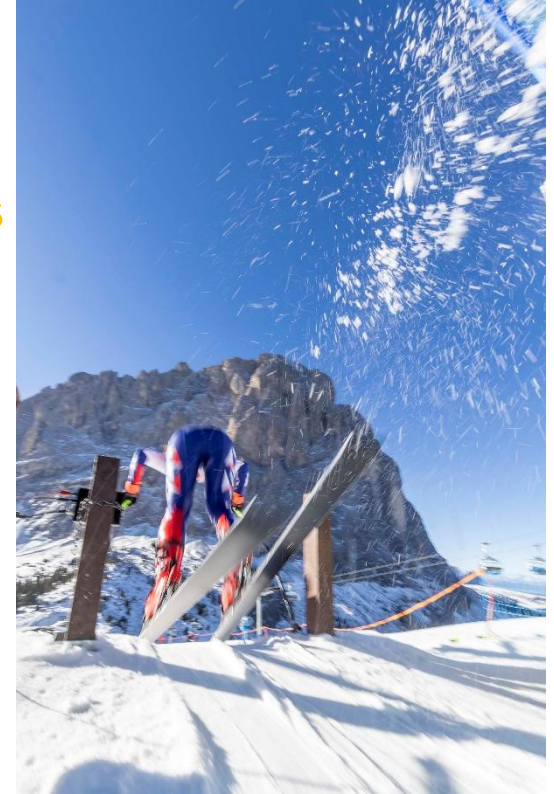
PRESENTING LONG TERM
CALENDAR 4 + YEARS



INTRODUCING NEW
DEVELOPMENT
PARTNERS

New Programs

- ✓ Implementing **modern** and **appealable activities**
- ✓ **Coaches' education**
- ✓ **FIS mentoring programs**
 - APSO program
 - WISH program
- ✓ **Partner Programs** (e.g., APEX 2100)
 - ✓ Female Coaches Sessions
 - ✓ Children “TOP-GUN” Week

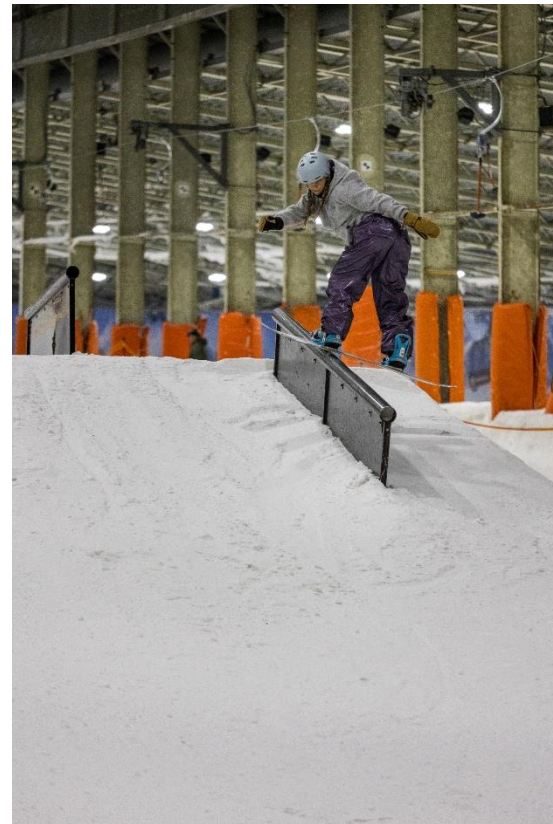


FIS MEMBERSHIP OVERVIEW



FIS Membership

- ✓ Newly established programs, since 2024:
 - FIS Plus program**
 - FIS Start program**
- ✓ Specially designed programs to provide to NSAs opportunity to diligently use given opportunities
- ✓ Redesigned **WORLD SNOW DAY**
- ✓ New membership communications
 - FIS Summit**
 - FIS Seminar**
 - FIS Development orientation session**



FIS Plus Program (FPP)

- ✓ Supports FIS members in alignment with the **FIS Strategic plan**.
- ✓ Provides financial support to enhance **governance and organization**



FIS Plus Program (FPP)

FOCUS AREA

- ✓ Gender Diversity & Inclusion
- ✓ Integrity & Sustainability
- ✓ Education & Knowledge Sharing
- ✓ Youth & Para-sport Development
- ✓ Other specific projects



FIS Start Program (FSP)

- ✓ Designed for **FIS members (1 and 2 votes)** & **Associate Members**.
- ✓ Directly connected with the **FIS Strategic plan** and its priorities.
- ✓ **Motivate** FIS members and **contribute** to their development at the national level by **strengthening** direct knowledge sharing support

FIS Start Program (FSP)

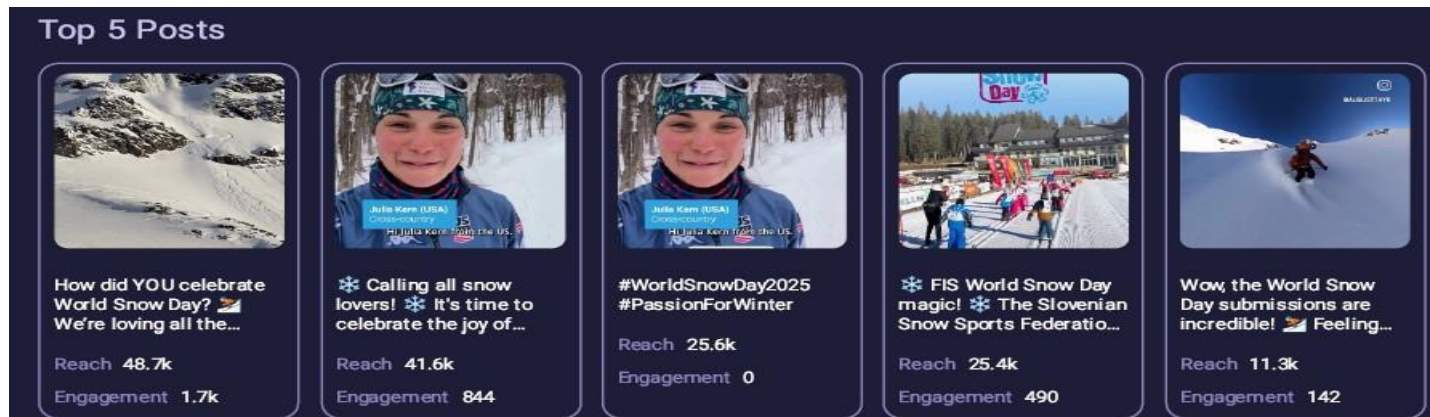
FOCUS AREA

- ✓ **Promotion:** Shred parks
- ✓ **Governance:** Administration, marketing, Finance, HR
- ✓ **Children & Youth Development:** Sport promotion
- ✓ **Sport & Activation Packages**



Redesigned World Snow Day

- ✓ Focus beyond skiing and snowboarding – **nature and sport habitat**
- ✓ **Target Group:** Youth & Children
- ✓ **Ambassadors:** Former World Cup athletes
- ✓ **Chall Challenge**



New Membership Gatherings/Events

- ✓ **FIS Summit:** Updates on FIS initiatives and activities
For 1 and 2 vote FIS members
- ✓ **FIS Seminar:** Thematic sessions on key development & membership areas
- ✓ **FIS Development Orientation Session:** Introducing new Development/Membership strategies

Q&A Session



