

Fluor Ban Implementation

Para Cross-Country



Testing Procedure

- FIS Control Team = Fluor Equipment Controller (FEQ)
- The control will be carried out randomly at World Cup and WSC competitions. Testing at other level events will be carried out on a random basis.
- The athletes skis can/could be tested before the start and after the finish of the race in the dedicated area as closed as possible to the start
- The testing procedure will follow as per the information provided during the Team Captains Meetings

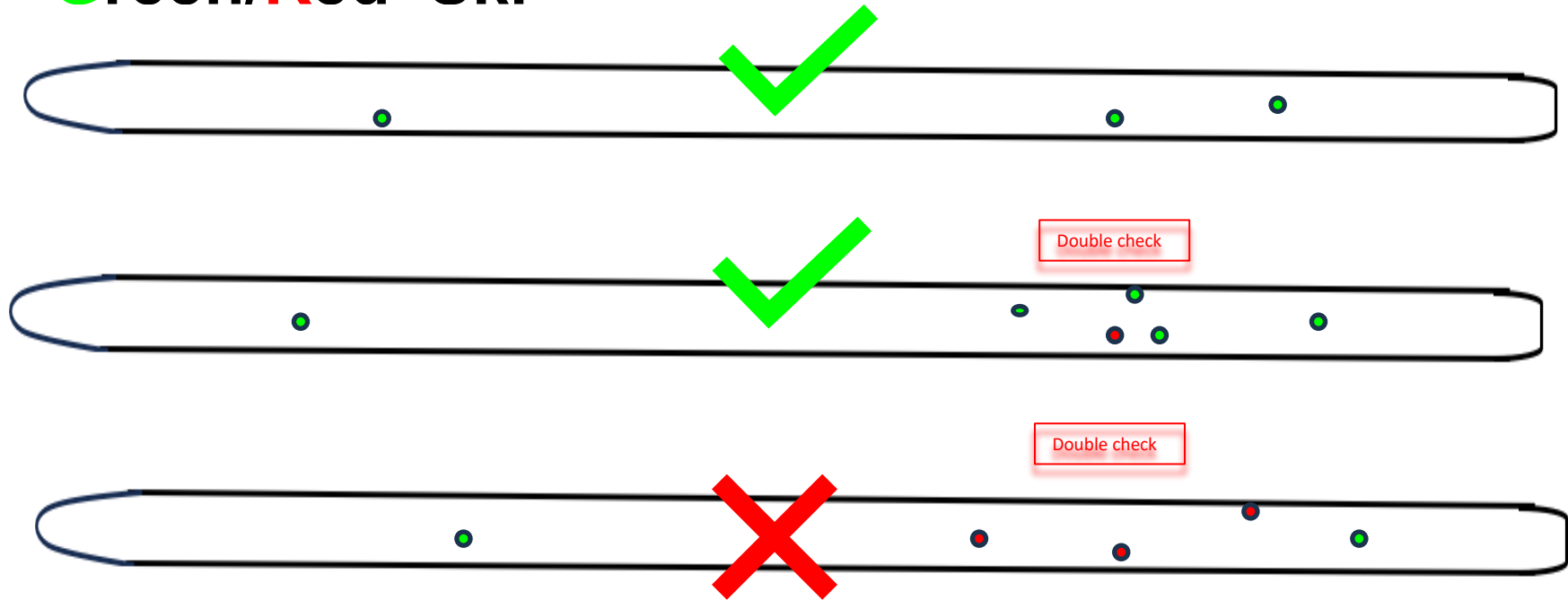
Red ski

- When an athlete ski is controlled “**Red Fluor**”, the staff representing the athlete will be informed by the Fluor Equipment Controller.
- A maximum amount of two people (athlete include) can come to the tent to collect racing skis.
- If requested, the Fluor Equipment Controller, after the end of the race, will show the results that:
 - will disqualify the athlete after competition (DSQ).
- All data collected will be registered in a FIS data base.
- Any remeasurements will not be considered when the “Red Fluor” ski get out of the dedicated Red rack.

Procedure and summarizing the result

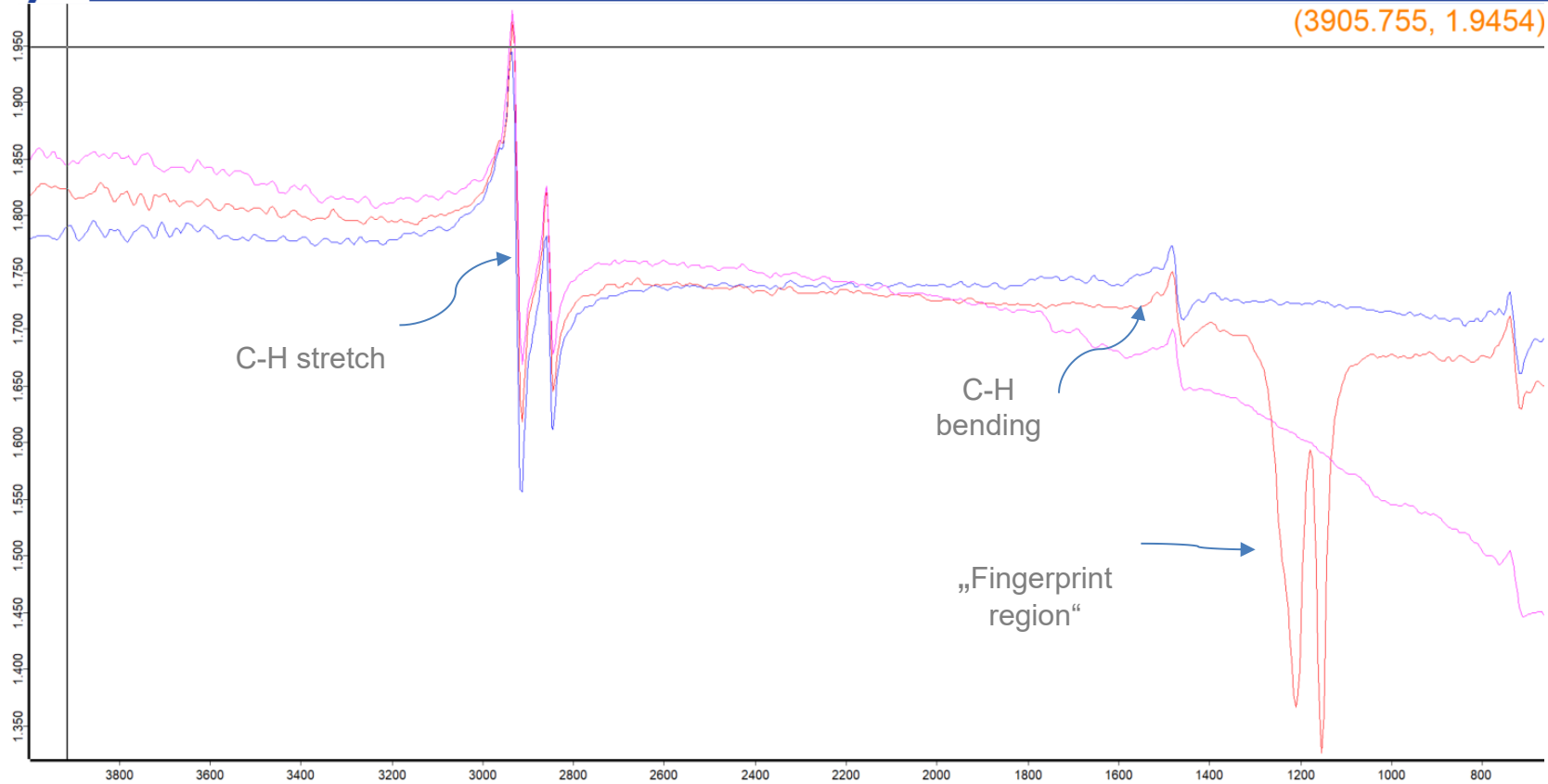
- 0 - 1 GREEN, move to next point, up to three points
- If > 1 RED but remeasure without moving the instrument if < 1 GREEN if > 1 RED,
- Green means green point, Red means red point.
- If RED continue to next point
- **If RED but close to threshold, make a background measurement and remeasure**
- If RED value is noted move the ski to the side, continue with other skis and then remeasure the previous ski for confirmation

Green/Red Ski



Sanctions

- A positive test will lead to a disqualification (DSQ as per 222.8) of the competitor
- The decision has to be communicated by the Fluor Equipment Controller and is not appealable
- Based on evidence (Testing results)



Material provided by Fluor Equipment Controller:

- Device, PC and all necessary hardware to do measurements

Material needed from OCs:

- OC in cooperation with FEQ to find the best setup possible to ensure smooth and effective testing procedure before and after the race.
- Fenced zone to mount the tent, as flat as possible, next to the start
- Tent, size 3mX6m with sidewalls/container
- Floor, any not slippery material, size 3mX6m
- Heating (not a blower)
- Reliable electric power source (110/220 Volts)

- 1 or 2 table size(2m x 0.75m) depending on the number of devices
- 1 or 2 chairs
- 4 x skis racks
- 2 or more assistant from 1 hour before the start until the end of the race
- Transport of the Fluor Equipment Controller material if their car cannot reach the finish area

Personnel and responsibilities

1 Fluor Equipment Controller:

Directly involved and responsible for the organisation of fluor testing before and during the event

Responsible for smooth flow of the fluor testing on site

The only person to communicate with the Jury and RDs

Collects information from teams and SRS about development in ski waxing to improve the testing “models”

Accommodation and travel costs covered by FIS

The Fluor Equipment Controller is on FIS payroll

2 - 4 OC assistants: depending on the number of the devices

Jury: Receives information from the Fluor Equipment Controller
Makes decision about DSQ and potential sanctions