



THE INTERNATIONAL SKI AND SNOWBOARD COMPETITION RULES (ICR)

REGULATIONS FOR SPEED SKIING

INCL. CHANGES AND PRECISIONS AUTUMN 2024

EDITION NOVEMBER 2024

INTERNATIONAL SKI AND SNOWBOARD FEDERATION

Blochstrasse 2; CH- 3653 Oberhofen / Thunersee; Switzerland

Telephone: +41 (33) 244 61 61

Website: www.fis-ski.com

All rights reserved.

© Copyright: International Ski and Snowboard Federation FIS, Oberhofen, Switzerland

Printed in Switzerland, July 2024

Table of Contents

1230	Speed Skiing Competitions	1
1231	Organisation	2
1232	The Course.....	3
1233	Technical Organisation.....	6
1234	Competition Equipment	12
1235	Competitors' Obligations	15
1236	Calculation of Race Points	15
1237	Venue	16
1238	Questions not Covered by Special Rules	17

Speed Skiing International Competition Rules

1230 Speed Skiing Competitions

These rules must be read in connection with the more general rules relating to all Ski Competitions (Art series 200 et seq. - FIS Licence, eligibility, prizes etc), to Alpine Events (Art 600 et seq. dealing with duties of Juries, Calculations etc), and to Snowboarding (Art. 2000 et. seq.) The following regulations are intended to clarify specific queries relating to the conduct of Speed Skiing competitions.

1230.1 Speed Skiing Events

Speed Skiing is practiced in three distinct event styles:

- S1 (World Championship, World Cup and FIS competition)
- S2 (FIS competition)
- S2J (World Championship and FIS competition)

Note that there is no separate Junior category for the S1 event. The S2 category is a development and feeder category for the S1 category. No competitor may participate in a S1 competition unless they have either Speedski points, a maximum of 100 FIS Alpine (Downhill, Super-G, Slalom or Combined) points or a minimum of 100 FIS point in Freestyle Ski Cross at some point in time during the previous 3 seasons or have already completed at least one season in the S2 or S2J category (either Pro or FIS). S1, S2 and S2J events are normally run concurrently, but only S1 counts towards World Cup points, based on the overall fastest competitor. S2 competitors compete in equipment approved for Alpine DH races. Junior competitors U18 and U21 may compete in the S2 category if they have completed a season as a S2J competitor, i.e. for a U18 or U21 competitor to race as a S2 competitor during any point of the season they must have FIS points on the 1st FIS points list of the season. These competitors may change the category entered during the season but not during an event.

1230.1.1 Age Limits

1230.1.2 The FIS competition year is July 1st – June 30th of the following year. In order to compete in international competitions a competitor must be no younger than age group U18.

1230.1.3 International junior competitions are restricted to U18 and U21 age group (exception National Junior Championships).

1230.1.4 Classification at International Competitions

Admitted years of birth for juniors:

FIS Competition Year	2023/2024	2024/2025
U18	2007	2008
	2006	2007
U21	2005	2006
	2004	2005
	2003	2004

1230.2 **FIS Speed Ski World Championships**

The official FIS medals can only be distributed to the competitors on the podium of the following categories (S1, and S2J women and men) with a minimum of 3 participants per category and a total of 8 nations across the categories. The winners of S1 junior aged women and men (integrated in the S1 category) can be rewarded by the Organiser, but will not obtain the official title of the World Champion.

1230.3 **FIS and FIS World Cup Competitions**

Before an organiser may host a FIS Speedski World Cup, the organiser must have hosted a FIS Speedski competition.

1231 **Organisation**

1231.1 **Race Committee**

The Organising Committee, is composed of the following:

- Chief of Race/Technical Director
- Chief of Course (esp. responsible for safety)
- Chief of Timing and Calculation
- Race Secretary

The above are the minimum for a Organising Committee, and others may be included (e.g. Race Doctor, Equipment Expert, Chief of Protocol) as required. The role of the Organising Committee is to create the environment within which the competition may be held. Team Captains' meetings are open to Team Captains and up to 3 competitors' representatives for those competitors not in a designated team. Team Captains and Competitors' representatives are responsible for passing all information from these meetings to all participating competitors.

1231.2 **The Jury**

The Jury is tasked with the correct running of the competitions. These include World Championships and World Cup races. It is composed of the following: - Technical Delegate (appointed by FIS) (Chair of the Jury)

- Chief of Race/Technical Director
- Chief of Course
- Referee (appointed by Race Committee)
- Assistant Referee (appointed by Team Captains/competitors)

1231.2.1 A competitor cannot be member of the Jury. The referee and assistant referee must not be from the same nation and must not be from the same nation as the host nation of the event.

1231.2.2 The Jury is responsible for ensuring that competitions are run safely and in accordance with the rules. During the competition itself, they are to remain in touch with each other by radio. Jury decisions, when necessary, will be on a simple majority, with a casting vote from the Technical Delegate if required. If security standards are not met (e.g. weather or track conditions), the Jury must insist on the suspension or cancellation of an event.

1231.3 The FIS Technical Delegate

An appropriately qualified FIS TD will be appointed by the FIS to each calendared event. For World Cup and World Championship events, the FIS TD will be appointed by the Committee for Speed Skiing. For FIS races, TD's are approved by the Committee for Speed Skiing on the proposal of the organising National Ski Association. The duties of the FIS TD are defined in the ICR Alpine Art 600 series (e.g. 601.4.9 and 602). Travel expenses, up to a limit of the cheapest means of travel (including highway taxes and parking fees), should be agreed, prior to the assignment, between the Organising Committee and the TD.

1232 The Course

1232.1 Homologation

Each Speed Skiing course must be homologated by the FIS as defined in ICR Alpine Art 650 „Rules about the homologation of courses“. The FIS TD must ensure that each race is run wholly within the limits of the piste as homologated – i.e. the useable piste may not be extended outside the boundaries of the homologated area. The Race Committee appoints the course setters for all FIS sanctioned events.

1232.2 Specification

From top to bottom, the track comprises 3 parts:

- the launching area
- the timing zone
- the run-out area

1232.2.1 The launching area

This is the upper length of the track, and must be provided with at least 3 starting points with an associated waiting area. The difference in theoretical maximum speeds between subsequent starts should not exceed 15kph. The waiting area for each start point must be securely fenced on the downhill side to stop personnel and material from slipping downhill.

1232.2.2 The timing zone

The last 100 meters of the competition track will be used as the basis for measuring the speed of each competitor. The length has to be measured very precisely, and frequently controlled to ensure that speed measurements remain valid. The OC is responsible for certifying the accuracy of the measurement to the TD.

1232.2.3 The run-out area. This area must be long enough, considering the speeds reached, to ensure the competitors' security. The slope must decrease progressively.

1232.3 Track Dimensions

The competition track must be attentively prepared, with particular care to ensure that the surface is as regular (smooth) as possible. The track must have a minimum width of 30m from 100m preceding the timing zone to the end of the run-out area. The width of the launching area above this point may get progressively narrower towards the top of the course. The top of the competition track must have a minimum width of 5m.

1232.4 Security Margin

A security margin, appropriately closed and free from all obstacles, must be prepared on both sides of the competition track. The margins at the timing zone, and for the 100m preceding and following the timing zone, shall be at least 20m wide for courses under 180kph, and at least 25m wide for courses above this speed. The width of these margins may get progressively narrower towards the top of the competition track, but may never be less than 3m.

1232.4.1 With the exception of track markings and timing equipment (see below), all other provisions, areas reserved for Jury, officials, coaches, TV equipment etc must be located outside the security margins.

1232.5 Track markings

The track will be marked along its sides with dye, pennons (small flags) or small twigs, and also across its width to indicate the end of the timing zone, and the limit of a 'no-turning' limit. The markings should be positioned as follows:

1232.5.1 Launching area: blue border markings. To increase the visual effect of speed, the markings need to be intermittent.

1232.5.2 Timing zone: red pennons every 10 meters. In addition, the end of the zone must be extended by red marking on both side and marked across its entire width by a red coloured line on the snow. This line must be at least 50 cm broad, and clearly visible from the competition track.

1232.5.3 Run-out area: , the end of which will be marked across its entire width by a green or blue coloured line or red coloured line in the snow. This line must also be at least 50 cm broad and clearly visible from the track; if no line is available, blue or green pennons on the side of the run-out must be set. Competitors are not permitted to brake or turn before this line. Further markings may then be used to indicate the run-out line, but spaced at 15m intervals.

1232.6

Duration of the Competition

< 180 kph		180 - 200 kph	
Day 0	Voluntary Training Day	Day 0	Voluntary Training Day
Day 1	Run # 1 Run # 2	Day 1	Run # 1 Run # 2
Day 2	Run # 3 Semi Final Final	Day 2	Run # 3 Run # 4 Run # 5
Day 3		Day 3	Semi Final Final

The competition program has to be proposed to the Speed Skiing technical committee for approval.

If a competition is to be cancelled, organisers should endeavour to give maximum notice and, preferably, at least 10 days warning. If the race is deferred, an alternative date must be given at the time of deferment.

1232.6.1

Duration of the World Championships

A special World Championship program including reserve days has to be proposed to the Speed Skiing committee for approval.

In cases of cancellation of a scheduled World Cup race the OC and the jury may decide to host an additional World Cup race applying rule 1232.7

1232.7.1

Double and triple World Cup events

2 or 3 World Cup races may be held at one resort, and on the same piste in a period of 3 and 4 racing days respectively, provided that the first race is limited to no more than 180kph, and that only those who have trained and raced the first event may enter the second. If 2 or 3 races are to be held, the timetable is to be as follows:

Day 0	Voluntary Training Day
Day 1	Mandatory Training Day: Free Training Run # 1 Run # 2
Day 2	Run # 3 Semi-Final Race 1 Final Race 1 (<180kph)
Day 3	Run 6 Semi-Final Race 2 Final Race 2
Day 4	Run 8 Semi-Final Race 3 Final Race 3

In cases of cancellation of a scheduled World Cup race the OC and the jury may decide to use Day 1 for the Semi-final and the Final of a replacement World Cup race.

1232.7.2 In exceptional cases (e.g. weather conditions) the jury may decide to host the finals of 2 World Cup races on the same day.

1233 Technical Organisation

1233.1 Windspeed Measurement

Windssocks, clearly visible from the start, and an anemometer for measuring windspeed must be positioned at the outer margin of the course, level with the top of the timing zone. At least 3 anemometers must be provided if requested by the Jury, and these should be positioned at the margin of the course at any place where, in the opinion of the Jury, there is a likelihood of strong winds. Should wind be sufficiently strong at either measuring position to cause competitors to deviate from their course (15kph or more), or to distort the results, the jury must stop the current run, note the registered windspeed and publish it in the official bulletin for the day. Should the wind drop below 15kph, the race may then be restarted. At all times, security of the competitors must be a paramount consideration.

1233.1.1 When the expected speed is 200kph or more, the maximum allowed wind speed in 1233.1 will be 10kph

1233.1.2 In case the wind is regular and blowing parallel to the track from the top to the bottom, the maximum allowed wind speed is 20kph.

1233.2 Communications

For security reasons, the Jury and the Starter must all remain in constant radio contact during the complete period of the race.

1233.3 Timekeeping

1233.3.1 Timekeeping is effected by using a cable-linked printing clock with a minimum measuring precision of 1/1000 sec for a 100m timing zone and minimum of 1/10.000 sec for a 25m timing zone, and controlled by photoelectric cells placed at the top and bottom of the timing zone. Speeds will be calculated from the distance and time difference, to a precision of 1/100 kph.

1233.3.2 Photoelectric cells. The position of the photoelectric cells must be accurately defined and installed by an expert survey, agreed by the Jury. Each photoelectric installation consists of:

- a transmitter and receiving set
- a reflecting transmitter-receiver
- a totally independent duplicate system, whose reflector must be fixed on the same vertical stand, and less than 10cm below the primary system; the reference time is provided by the upper cells.

- 1233.3.3 The entirety of all photo-electric installations must be placed a minimum of 10m outside the timing zone (i.e. it may be within the safety margin area). The whole of the photoelectric cells (and any support) must be protected by a graded 'embankment' of packed snow to protect any skiers who may hit the installation. The overall height of the timing including such protection should be as low as possible, and must not exceed 80 cm in height and must be a minimum of 3 metres long. As an added safety measure, all supports should be weakened at snow level in order to break away in the event of a collision from a competitor.
- 1233.3.4 Timing equipment must be fully operational and used during competitive runs. A qualified person, such as an official timer from a national association, timing company or the FIS, should operate it.
- 1233.3.5 In case of a world record attempt:

Photo-electric cell stakes have to be installed by a certified geometer.

Under control of the Technical Delegate, photo-electric cell stakes have to be checked by the same expert just after the world record run.

The expert geometer will write a report, this report will be included as attachment of the FIS Technical Delegate race report.
- 1233.4 Starting Positions**
- 1233.4.1 Starting positions are determined by the Jury and are indicated with a pole, a fence or a banner. The approach from the public piste to a point level with the current start area must be securely protected to stop competitors and/or equipment from slipping on the downhill side; this security fence is known as the CAT line.
- 1233.4.2 Starting positions for men and women in all three categories (S1, S2 and S2J) may be different.
- 1233.4.3 For the first training run and the first race run, the starting positions must not facilitate a speed of more than 180kph for S1 competitors, and 150kph for S2 and S2J competitors. For mixed category events, each run must start at the lowest position required by the categories present.

In S1 World Championships the first race run will have no speed limit.
- 1233.4.4 The last starting position on any day can be used as the first one for the next day. The Jury can decide to set lower or higher start points according to weather and track conditions.
- 1233.4.5 At any stage in the competition, the Jury may lower a start position if security conditions (wind, visibility, damaged track etc) so indicate.
- 1233.4.6 The final start position for S2J and S2 competitors must be set such that their maximum speed does not exceed 190kph (Note also the provisions of Rule 1233.5.2 with regard to S2 and S2J category starting positions).

1233.5 Starting Order

- 1233.5.1 At the beginning of the season race numbers will be allocated to each competitor following the order of the speed ranking of the previous season (see §1233.10.4). These numbers will be retained for all races of the season. The starting order of competitors for the first run of a race is determined according to their position in the speed ranking of the previous season with the best 15 competitors present being drawn. Racers without speed ranking will be allocated a number ranked after the racers with speed ranking by FIS points order.
- 1233.5.2 Men and women (S1, S2 and S2J) will run in different categories, and as separate groups. The Jury will decide the order of departure of each group at the Team Captains' Meeting according to anticipated piste conditions. No S2J competitor may start from a higher position than the equivalent S2 competitor, and no S2 competitor may start at a higher point than that used for the equivalent S1 competitor.
- 1233.5.3 After the first run (see §1233.5.1) the starting order for each group (by style and gender) will be determined by the speed reached by each competitor in that group during the previous run of the race (i.e. excluding training runs), with competitors starting in increasing order of speed.
- 1233.5.4 At the Race Committee meeting, the Jury will advise the number of competitors in each category for each of the runs to be held the next day. After each run, the Jury must eliminate competitors who do not demonstrate sufficient technical skills to participate in the next run.

1233.6 Forerunners

- 1233.6.1 Forerunners are to be provided by the organiser. They must fully comply with the FIS rules for Speed Skiing. In cases where this is not possible, for the first official run, the Jury will draw two (male) competitors from the last 10 ranked competitors to act as forerunners. The speeds of these forerunners are retained as their official results for that run.
- 1233.6.2 For the second and subsequent runs, all competitors will run in their categories (S1, S2 etc) in jury decided BIBO order of the speeds of the last run. Start order (BIBO order) for runs has to be announced the day before in the captains meeting. The first two male competitors, and the first female competitor to start in each run will also undertake forerunner duties, and are required to report to the Jury on the completion of their run; as competitors, their times will be recorded in the results. In addition, organizers may invite additional, non-competing forerunners who have demonstrated their ability to participate safely.
- 1233.6.3 **Starting Order in Extraordinary Conditions (Snow Seed)**
In extraordinary conditions, the Jury may change the starting order. A group of at least 6 competitors, nominated in advance, start before start number one. These 6 competitors are drawn from among the last 25% of the start list. They will start in reverse order of their start numbers.

- 1233.7 Number of runs**
All runs must be timed, and all non-training times count towards the final results. The Jury will decide the number of runs on any particular day and per competitor (excluding foreruns). If a world speed record is broken during a run, the competition must be stopped for that category (male or female) after the run is over.
- 1233.8 Starting Procedures**
- 1233.8.1 A competitor may only start at the start position currently in use. However, all competitors must remain above the start line until the Starter has announced “Go”, at which time the competitor should descend to the start position and start the run within the following 60 seconds. If a competitor is not starting in the 60 seconds following the “GO” he will not be allowed to start.
- 1233.8.2 The starter may only give the start signal after receiving the “Course Clear” signal from the Chief of Race or Chief of Course.
- 1233.8.3 Any competitor who does not show up after their number is called will not be allowed to continue the race, except if their absence was as a result of force major (e.g. breakdown of uplift facilities) and only then by permission of the Jury. In such a case, the Starter may allow the competitor to make a provisional start (see also ICR Art 613.6) pending a final Jury decision. Any competitor who is excluded will have their best speed during the competition prior to that stage registered in the results list.
- 1233.9 Classification**
- 1233.9.1 The speeds and times achieved by each competitor are announced and printed on a board at the bottom of the race piste as competitors complete their runs. At the end of each day, a Female and a Male ranking are drawn up, based on the best speeds achieved to date. Speeds realised during foreruns are excluded from the official results, with the special exception of forerun times by snow seed forerunners on the first day (see Art 1233.6.1 above).
- 1233.9.1.1 If decided by the jury, during every run which could be the final of each competition day the leading 5 competitors are required to stay in the enclosed area at the finish area until the competition for that run has finished and equipment checks have taken place.
- 1233.9.2 The final ranking (both general and by category) of a race is established only with the results of the finale of the qualified competitors (see Art 1233.5.4 above). All other competitors are then classified in descending best speed order working back from the final qualified racer group. Speed skiing competition categories are:
- S1 Male and Female
- S2 Male and Female
- S2J Male and Female
- 1233.9.3 Awards must be presented to the top 3 men and top 3 women of the S1 category, and to the winners of other categories represented; prizes may be

presented to a greater number of top men (to a limit of the top 10 men). If prize money is to be awarded, then its distribution is to be published in the official programme prior to the start of the event (Art. 213).

1233.10 Results

1233.10.1 The final official results will be issued to all officials, team captains and competitors who participated in the competition. In addition, 3 complete sets of documentation are to be sent to the FIS Headquarters: a copy will then be sent by the FIS to the Chair and the Secretary of the Speed Skiing Committee.

1233.10.2 Nations Cup
During the course of the season, FIS will publish running Speed Ski World Cup (SSWC) points lists based on the official results as they are issued. On the basis of this, and the results of the final event, the World Cup champions will be presented with their trophies at the World Cup final. The medals and trophies provided by FIS will only be distributed to the winner of the S1 category. The Organising committee of the World Cup Final has to organise the medals for the winner of S2 and S2J categories.

1233.10.2.1 All SSWC races and FIS races hosted on the same track on the same day count for a national ranking, the Nations Cup, which will include all nations present and be based on the three best speeds achieved by that nation by three different competitors:

- the three competitors must include a Junior (S2J) and a woman and a man
- The speeds of these three competitors are accumulated and ranked accordingly.
- These three competitors may be from different categories
- Any nation unable to represent one of the above categories will have 100kph added per missing category to their classification.
- All nations in a competition will be classified, including those with only 1 or 2 competitors.

Ranking points will be based on the number of nations ranked in that competition – eg if there are 7 nations, points will run 70 (for 1st place), 60, 50, 40, 30, 20 and 10 (for last place). If there are 4 nations, points will be 40 (for 1st), 30, 20 and 10 (for last).

1233.10.3 SSWC points will only be allocated to the S1 category (males and females) if there are ranked a minimum of 3 competitors at each World Cup competition as follows:

	Place	Points
	1	100
	2	80
	3	60
	4	50
	5	45
	6	40
	7	36

	8	32
	9	29
	10	26
	11	24
	12	22
	13	20
	14	18
	15	16
	16	15
	17	14
	18	13
	19	12
	20	11
	21	10
	22	9
	23	8
	24	7
	25	6
	26	5
	27	4
	28	3
	29	2
	30	1

- 1233.10.4 At the end of the season, the FIS will publish the following list, separated into male and female categories:
- The final SSWC ranking list for S1 competitors. In case of equality of points results, for competitors who have the same points ranking will be done by best speed of the season (see below).
 - The classification according to best speed achieved during the year.
 - The classification according to FIS point order, calculated in accordance with Art 1236 below. In addition, FIS will publish a national ranking, based on the system defined as in Rule 1233.10.2.1

- 1233.10.5 FIS Points
- Each main category (S1, S2 and S2J women and men) has its own FIS points list. There are total 6 independent FIS points lists.
- A competitor can compete in one category per race only
 - A competitor can compete changing their category at each race
 - In a one competitor category, the competitor will get FIS points from the first place
 - If the final run is slower than the semi-final then the first non-qualified competitor for the final will get their FIS points and a penalty equal to the gap between them and the last qualified competitor for the final:

Example:

Competitor # 12 = last qualified at 180kph for the Final

Competitor # 5 = first non-qualified at 178kph for the Final

Final slower than Semi Final: competitor # 12 finish last at 169kph

	R	No	Semi final	No	final
qualified	1	# 3	184 kph	# 11	173 kph
	2	# 4	183 kph	# 4	172 kph
	3	#11	182 kph	# 9	171 kph
	4	# 9	181 kph	# 3	170 kph
	5	# 12	180 kph	# 12	169 kph
	6	# 5	178 kph		
	7	# 8	177 kph		
	8		

All the FIS point of the race are calculated according the best speed achieved at the final run (173 kph) and, for the following non-qualified competitors, we add a penalty corresponding to the gap (2 kph) between 178 kph and 180 kph.

Competitor # 5: points from 169 kph + point from «169 kph- gap 2 kph» = points from 167 kph

Competitor # 8: points from 166 kph (gap 3 kph)

1234 Competition Equipment

Equipment rules are most important, both for ensuring fairness in events, and for competitor safety. Consequently, equipment of all competitors drawn by the Jury is checked after each run at the bottom of the braking area. The jury may also decide to check the equipment of a racer in the starting area before the run. Any person refusing a control will be excluded from the competition and from the official results, as will any competitors or forerunners found to have non-conforming equipment. Any competitor may claim that another competitor's equipment does not conform to these rules, by lodging a claim with the Chief of Race accompanied by a deposit of CHF 100,00. Should the claim be correct, this deposit will be returned; otherwise the deposit will be held by the FIS for Speed Skiing development (e.g. TD courses).

1234.1 Skis

S1 category skis must be between 2.20 and 2.40 m in length. They must not weigh more than 15.0 kg for a pair, including all bindings and attachments, must be constructed for high speed running, and must not have any added aerodynamic appendages. S2 and S2J category skis must be standard production downhill skis, as defined in current or former FIS Equipment Specifications, and between 210 and 225 cm in length.

1234.2 Bindings

Speed Ski bindings must be equipped with functioning ski-brakes; straps are prohibited. Nothing at all must modify their function, and they must not be covered with any streamlining or additional aerodynamic forms. Neither must they be raised more than 2.5 cm above the normal top surface of the ski.

1234.3

Ski poles

Ski poles are compulsory for speed skiers. They must be at least 1m long (as measured in a straight line between the extreme ends), and a pair of poles must not weigh more than 2 kg. Baskets or 'rings' are obligatory, must be at least 3cm in diameter, between 3 and 10 cm long, and must be placed no more than 5cm from the lower end of the pole with the largest diameter at the lowest part. The handles, placed at the very upper part of the poles and without hand straps ('sword knots') must be free of sharp or prominent parts, as must the entire pole.

1234.3.2

In use, the competitor may not extend their arm or arms when exiting the timing zone in any manner which may result in a time advantage. In case a competitor is extending his/her arms he/she will be disqualified.

1234.4

Ski suit

For the S1 category, clothing should be a plastified ski suit suitable for Speed Skiing (the plastified suit must be covered by effective slip-resistant clothing until the athlete has reached the waiting area). For the S2 and S2J categories, clothing as well as all elements of the equipment must fulfill FIS rules for Alpine Downhill as defined in FIS Equipment Specifications, especially as regards air permeability. ('Plombing'). For all categories, it is compulsory to wear underclothing covering the body and at least $\frac{3}{4}$ of the arms and legs under the suit. In order to avoid severe burning, dorsal protection worn under the suit is mandatory (see Art 1234.9). No protective elements can be more than 4.5 cm thick. Competitors must wear gloves to protect their hand, for S2 and S2J, these may not be plasticized.

1234.5

Ski boots

Ski boots must be based on standard model(s). Ski boots cannot weigh more than 6kg per pair. Boots may be customized and must not have any added aerodynamic appendages or streamlining, but may be partly covered by the legs of the ski suit. Boots must be capable of being opened by hand and without the use of any tools.

1234.6

Helmet

For S1 competitors, a crash helmet (the inner helmet), fully covering the athlete's head is obligatory and must be fitted with a face protector. It must be fastened solidly with a chinstrap and safety-buckle. The crash helmet and the head must be separated with foam no less than 0.5 cm thick (under natural pressure). Additional neck and face protection may be added (the outer helmet), but must not have any dangerous protuberances, and must separate from the basic protective helmet in the event of a fall. This will normally be effected by use of 2 or more frangible plastic screws or with points of glue to hold the 2 parts together. It may not exceed 40 cm in any dimension (the 'circle test'), including padding and flexible seals. It must not weigh more than 2kg in toto (both inner and outer). Competitors may use inner helmets conforming to CE 1077 standards and fitted with an approved outer-helmet fixation system accompanied by a maker's certificate. In the case of such helmets, the "circle test" is increased to 48 cm in diameter.

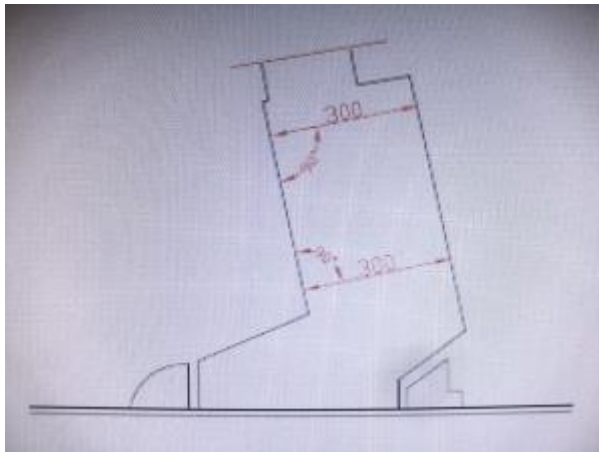
1234.6.1 S2 and S2J competitors and forerunners must wear a crash helmet for official training as well as for the competition that meets the FIS Equipment Specifications (Alpine DH).

1234.6.2 In case additional onboard data equipment and/or cameras (both inner and outer) are used in or on helmet (see § 1234.11) the weight limit for S1 helmets will be 2.5 kg for all competitors.

1234.7 Fairings

Speed skiers may wear rear fairings under the ski suit with the following restrictions:

- Each fairing may not exceed 1 kg in weight, must be constructed from a pliable material, must not cover or inhibit the working of the ski binding, and must be non-wounding when breaking.
- The maximum depth of the fairings, measured perpendicular to the leg, must not exceed 30 cm from the front fairing and/or buckle to the back of the spoiler at any point.
- front fairings must be rounded and follow the standard shape of the boot.



(new diagram)

1234.7.1 In case additional onboard data equipment and/or cameras (both inner and outer) are used in or on fairings (see § 1234.11) the weight limit for fairings will be 1.5 kg for all competitors.

1234.8 Starting numbers

Starting numbers must be attached on the outer helmet, a supplementary number may be used on the skis. The shape, size and style of lettering must not be altered, on penalty of disqualification. The start numbers must be at least 6 cm high, and clearly legible. The start number can carry a sponsor's name as long as every number has the same marking, and the individual letters are smaller than the start number(s).

1234.9 Protectors

A back protector is obligatory to protect against both frictional burning and mechanical injury, and must conform to be available from general commercial sources. The back protector must comply to CE Norm EN1621-2:2014-Level 1, EN1621-2:2014-Level 2 or later. The size and shape of the protector must correspond to the indications of the manufacturer for the body size of the racer. The dorsal protection must not incorporate additional

aerodynamic elements or any metal or sharp components nor any elements, that are not accessories of the original manufacturer.

1234.9.1 A Ski AirBag Protector can be used instead of a back protector. The ski air bag protector model must be certified and released by the manufacturer for use in speed ski racing.

1234.10 Accessories

All accessories (metallic bracelets, watches, chain bracelets, large ear-rings etc.) are prohibited for safety reasons. Spectacles with glass lenses or metal frames are also prohibited, and other types should be selected with regard to the safety risk they may pose.

1234.11 Electronic Devices

Electronics on-board electronic photo, video and data-tracking systems are allowed (cameras, GPS, accelerometer, Bluetooth system, etc...).

Onboard electronic data system and cameras may be placed:

- On skis;
- In helmet;
- In fairings

The use of electronic devices in a run has to be announced the day before in the captains meeting to allow all racers to adjust weight of helmets and fairings according to §1234.6.2 and §1234.7.1.

1235 Competitors' Obligations

All competitors are required to abide by general FIS regulations on nationality, medical and doping testing, eligibility, attendance at prize giving etc as outlined in the 200 series of FIS articles.

1236 Calculation of Race Points

1236.1 Race points in any event shall be calculated using the following formula:

$$P = (S_x / S_o - 1) \times F$$

Or

$$P = (T_o / T_x - 1) \times F$$

Where:

P = Race Points

S_x = Speed of the winner in kph to 2 decimals without rounding

S_o = Speed of the competitor in kph to 2 decimals without rounding

T_o = Time of the competitor to 1/100th of a second

T_x = Time of the winner to 1/100th of a second

F = 1500 (the 'F' factor)

1236.2

For World Cup, World Championships and FIS races, based on winning S1 competitors, there will be no Race Penalty to add. Where S2 and S2J competitors do not have any S1 competitors as a basis for race points, FIS will publish an appropriate Race Penalty; where S2J competitors have neither S1 nor S2 competition, FIS will advise the S2J specific penalty. Validity of points on any listing is in accordance with FIS practice as defined in the points listing of the FIS Classification Committee.
(Current race penalties are: S1 0 (zero) pts, S2 100 pts, and S2J 180 points).

1237

Venue

1237.1

Leader board/ interview backdrop

The leader board measures; width minimum 200 cm x height 240 cm. It is positioned behind the exit gate in order to film the leading competitor during the race.

The OC's duty is to provide enough space at the finish area to set up the leader board. This must be close to the equipment control tent to enable the race leader to be followed by TV coverage at all times.

The space behind the exit gate should be large enough to set up the leader board without obstructing the view for the television crews and the press, who will be positioned at the finish area.

The position of the leader board must be such that athletes standing in front have a clear view of the track and the result display board.

The diagram shows a leader board layout with the following sections:

- 1a) RESORT NAME**: A red banner at the top with white text.
- FIS SPEED SKIING WORLD CUP**: The FIS logo and event name in the center.
- 2)**: A grid of 12 yellow squares representing LOC sponsors.
- 1b)**: A grid of 6 purple squares representing resort logos.
- 3)**: A grid of 12 white squares representing FIS sponsors.

The advertising space is allocated as follows:

- 1a) Resort name** White text on red background only max 200cm x 26cm
- 1b) Resort logo** 6x (22cm x16,5cm)
- 2) LOC Sponsor** 12x (22cm x 16,5cm)
- 3) FIS Sponsor** 12x (22cm x 16,5cm)
In case of absence of FIS title sponsor to be allocated for resort logo and LOC sponsor

Production must be organised by OC

1238

Questions not Covered by Special Rules

The guidance given elsewhere in the FIS International Competition Rules (ICR) should be applied for any questions not covered in the special rules elaborated above. In the event of ambiguity, problems should be referred back to the FIS Office and to the FIS Speed Skiing Committee.