

# Fluor ban implementation

FIS SX-SBX-SB



NOVEMBER, 2023

- FIS confirmed full implementation of the fluor wax ban to start 2023/24 season
- FIS will carry out testing to ensure that boards are fluor-free at top-tier events
  - FIS World Cup
  - FIS World Championships
  - Other major events such as FIS Junior World Championships
- Testing at other level events will be carried out on a random basis to ensure those events are also regulated
  - Cooperation with NSAs

- FIS has agreed, like the IBU, to ban the use of fluorine waxes, which is mandatory for FIS competitions. Where and how the FIS will control is entirely its decision.
- Be sure, that it is in the interest of FIS to make the start of testing as smooth as possible
- Please note that FIS will not publish certain information regarding the number of tests and places because some information will stay confidential. ( you will never receive f.e. the detailed list of all doping controls etc.)

## Testing Procedure

- FIS Control Team = Equipment Fluor Controller
- The control will be carried out at each World Cup competition, JWSC&U23WSC.
- The testing will be performed at the finish area next to the exit gate
- Dedicated testing sessions offered before the season's start

## Testing Procedure After Competition

- **SX-SBX-SB Alpine**

athletes can/could be randomly tested during qualification

Men - 5 bibs out of the first 16 starters

-10 bibs out of the rest

Ladies - 5 bibs out of the first 16 starters

- 5 bibs out of the rest

## Testing Procedure After Competition

- 1 or 2 athletes can/could be randomly tested from the first heat until the final
- Top 4 (6 if heats of 6 format) athletes mandatory tested after the final

## Testing Procedure After Competition

1. Skis/boards delivered to the Fluor Test Area
2. The athlete personally put the ski/board in the designated rack of the Fluor Equipment Controller.
3. Boards are tested (tent).
4. All data collected will be register in a data base by FIS.
5. After the skis/boards have been tested, they will be placed in the designated rack and can be collect by athletes or teams.

## Red ski/board

- When an athlete ski/board is controlled “**Red Fluor**”, the staff representing the racer will be informed by the Equipment Fluor Controller.
- A maximum amount of two people (athlete include) can come to the tent to collect racing skis/boards.
- If request, the Equipment Fluor Controller, after the end of the race, will show the results that:
  - lead to the athlete’s disqualification (DSQ).
- All data collected will be register in a FIS data base.
- Any remeasurements will not be considered when the “Red Fluor” ski/board get out of the dedicated Red rack.



# ICR

## 222.8

Use of fluorinated wax or tuning products containing fluorine is prohibited for all FIS disciplines and levels. Fluorinated wax can be a competitive advantage and its use in competition will result in disqualification. (see competition rules and equipment specifications.)

## Measuring procedure

- GREEN, move to next point, up to three points
- RED, -confirm red point by remeasurement, confirm extent of red area, if three points are red, DSQ
- When ski/snowboard are GREEN, they will be moved to a dedicated rack where they can be picked up immediately
- When ski/snowboard are RED, they will be moved to a dedicated RED rack.

## Decision of the FIS Council

In order to have a testing process that runs smoothly at the beginning of the season and to eliminate any speculation of a possible contamination of skis/snowboards, the FIS Council decided to increase the threshold that could lead to a disqualification of an athlete due to the use of banned fluorine waxes for a limited transition period.

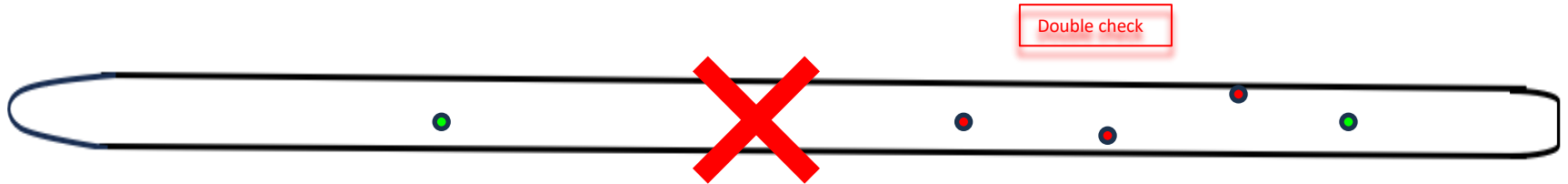
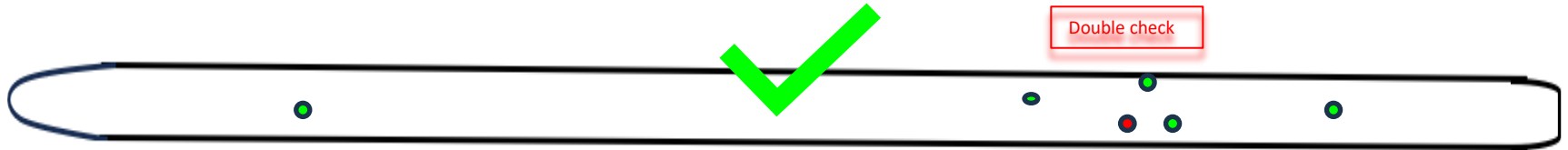
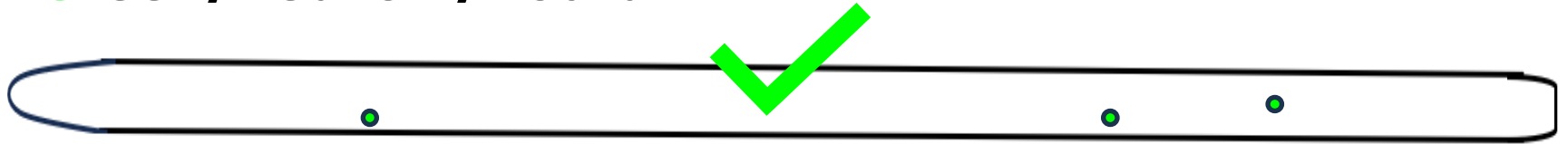
The threshold for tests conducted at the finish of a race will be **raised from 1.0** (defining clean skis/snowboards without any fluorine content) **to 1.8** for the limited period of time until **31<sup>st</sup> December 2023**. All results of the tests during this transition period will be documented.

## Decision of the FIS Council

The threshold for pre-race tests in Cross-Country and Nordic Combined where any possible contamination is excluded, will remain at the threshold of 1.0 as per the original limit

In regard to the Bruker testers ordered by companies and National Ski Associations directly to be used for their own fluorine purity testing, the Software setup will remain with the threshold

# Green/Red Ski/Board



# Sanctions TBC

## After the finish

- A positive test will lead to a disqualification (DSQ as per 222.8) of the competitor
- The decision has to be communicated by the Fluor Equipment Controller and is not appealable
- Based on evidence (Testing results)

*"In the regulatory sense, fluor controls are considered a material control as defined in ICR rule 222.6. When a ski is indicated red it will be moved to a second instrument and preferably other operator for a second judgement. We do this to minimize any operational influence on the result i.e. we want to be able to reproduce the result. Both in terms of hardware and human error. In the cases where this is not possible no extra instrument or personnel. The extra measurement will be conducted on the same instrument and same person but with a delay were other skis have been measured in between.*

*Decisions after the testing procedure described above cannot be appealed against, as set out in ICR rule 222.6.1 ("At all FIS events where official FIS measurement experts using the official FIS measurement tools are appointed, the result of measurements carried out at the time are valid and final, irrespective of previous measurements")."*

## Material provided by Fluor Equipment Controller:

-Tent 3mX3m

-Table 2.80x0.74

-Electric heating

-Device, PC and all necessary hardware to do measurements



## Material/Manpower needed from OCs:

- Fenced zone to mount the tent, size 3mX5m as flat as possible in the finish area next to the exit gate
- Floor, any not slippery material, size 3mX3m
- 1/2 chairs
- Reliable electric power source (110/220 Volts)

-2X skis/boards racks

-1or 2 assistant from 1hour before the start until the end of the race

-Transport of the Fluor Equipment Controller material if his car couldn't reach the finish area

**-If OCs prefer to use their own material such as, 3mX3m tent with sidewalls, table and heating, obviously it would be a great help for us, please let us know so that we can organize ourselves in the best possible way**

# Personnel and responsibilities

## 1 Fluor Equipment Controller:

Directly involved and responsible for the organisation of fluor testing before and during the event

Responsible for smooth flow of the fluor testing on site

The only person to communicate with the Jury and RDs

Collects information from teams and SRS about development in ski waxing to improve the testing “models”

Accommodation and travel costs covered by FIS

The Fluor Equipment Controller is on FIS payroll

**1-2 LOC assistant:** depending on the number of the devices

**Jury:** Receives information from the Fluor Equipment Controller  
Makes decision about DSQ and potential sanctions