



SEASON 2023/24

FIS BROADCAST MANUAL ALPINE ANNEX

This document is a BROADCAST SUPPORT tool to be used as specific annex of the FIS BROADCAST MANUAL for all Alpine World Cup Events. In this documentation you can find necessary information and standards for the Broadcast operations valid for the season 2023–2024.

TABLE OF CONTENTS

1	ALPINE SEASON & FORMATS	5	2.3 Recordings	42
	1.1 Season 2023/24	6	2.3.1 Recorded Start	42
	1.1.1 Calendar	6	2.3.2 Interviews	42
	1.1.2 Starting Time	8	2.3.3 Top10 Competitors	42
	1.1.3 Hostbroadcasters and Contacts	9	2.3.4 Highlights and compilations	42
	1.1.4 Downhill Training Broadcasting Program	10	2.3.5 winner's run	43
	1.2 Event Description	11	2.3.6 Top3	43
	1.2.1 Downhill	11	2.3.7 Program recordings	43
	1.2.2 Super G	12	2.3.8 Video control	43
	1.2.3 Giant Slalom	13	2.3.9 Falls	43
	1.2.4 Slalom	14	2.4 Audio	44
	1.2.5 Team Combined	15	2.4.1 On course	44
2	PRODUCTION & COVERAGE	16	2.4.2 Start and LeaderBoard	44
	2.1 Production Standard	17	2.4.3 Jury radio Channel	44
	2.1.1 Video	17	2.4.4 Additional Feeds	44
	2.1.2 Audio	17	2.5 TV Host-Broadcaster Team	45
	2.1.3 Multilateral Broadcast Specifications	18	2.6 TV Infrastructures & Logistics	46
	2.2 Coverage	24	2.6.1 TV Towers	46
	2.2.1 Broadcast Areas	24	2.6.2 Transport and Circulation	49
	2.2.2 Camera Plans	29	2.6.3 Lighting	50
	2.2.3 Slowmotion Plans	37	2.7.4 Cabling	50
	2.2.4 Special Cameras	39		

3	VENUE OPERATION & SCHEDULE	51	4	MULTILATERAL RUNNING ORDER	62
	3.1 Definition of Roles and Contributors	52		4.1 Example of Downhill (Speed events)	63
	3.2 Surveys	52		4.2 Example of Giant Slalom (Tech. events)	66
	3.2.1 Summer Survey	52			
	3.2.2 On Snow Survey	53	5	GRAPHICS – DATA & TIMING	71
	3.2.3 Snow Control & Back-Up	53		5.1 Data & Timing Installations	72
	3.3 Rehearsals	54		5.2 Graphics Specifications	73
	3.3.1 Test Events	54		5.3 Feed & Scripts	74
	3.3.2 Downhill Trainings	54		5.4 Unilateral Broadcasters kits	74
	3.3.3 Other Rehearses	54		5.5 Multilateral TV Graphics Updates	75
	3.4 Daily Programs	55	6	INFORMATION SERVICES	85
	3.5 Procedure & Communication	56		6.1 Social Media	86
	3.5.1 Starting Times	56		6.2 FIS Information	87
	3.5.2 Change of Program	56	7	CONTACT	88
	3.5.3 Interruptions	57			
	3.5.4 Competition Radio Communication	59			
	3.6 Advertising Alpine Specifications	60			
	3.6.1 On Course	60			
	3.6.2 Start	61			
	3.6.3 Virtual Advertising	61			



The background of the slide is a photograph of an alpine skier in a dynamic racing position, leaning into a turn. The skier is wearing a dark racing suit with 'Bull' and 'hibel' logos, a helmet with 'OAKLEY' branding, and 'HEAD' skis. The image is overlaid with a semi-transparent orange and blue graphic that curves across the top and bottom of the frame. The text '1. ALPINE FORMATS' is positioned in the bottom left corner of this graphic area.

1. ALPINE FORMATS

1.1 SEASON 2023–24

1.1.1 CALENDAR

MEN										
Month	Date	Day	Site	Nation	DH	SG	GS	SL	TC	Remarks
October 23	29.	Sun	Sölden	FIS/AUT			29.			Opening W&M
November 23	11.–12.	Sat–Sun	Zermatt-Cervinia	SUI/ITA	11./12.					Speed opening
	18.	Sat	Gurgl	AUT				18.		
December 23	01.–03.	Fri–Sun	Beaver Creek	USA	01./02.	03.				
	09.–10.	Sat–Sun	Val d'Isere	FRA			09.	10.		
	15.–16.	Fri–Sat	Val Gardena/Gröden	ITA	16.	15.				
	17.–18.	Sun–Mon	Alta Badia	ITA			17./18.			
	22.	Fri	Madonna di Campiglio	ITA					22.	Night event
January 24	28.–29.	Thu–Fri	Bormio	ITA	28.	29.				
	06.–07.	Sat–Sun	Adelboden	SUI			06.	07.		
	12.–14.	Fri–Sun	Wengen	SUI	13.	12.		14.		
	19.–21.	Fri–Sun	Kitzbühel	AUT	19/20.			21.		
	23.–24.	Tue–Wed	Schladming	AUT			23.	24.		Night event
February 24	27.–28.	Sat–Sun	Garmisch-Partenk.	GER		27./28.				
	03.–04.	Fri–Sun	Chamonix	FRA	02./03.			04.		
	10.–11.	Sat–Sun	Bansko	BUL			10.	11.		
	17.–18.	Sat–Sun	Kvitfjell	NOR	17.	18.				
March 24	24.–25.	Sat–Sun	Palisades Tahoe	USA			24.	25.		
	02.–03.	Sat–Sun	Aspen	USA			02.	03.		
	09.–10.	Sat–Sun	Kranjska Gora	SLO			09.	10.		
	16.–17.	Sat–Sun	Saalbach	AUT			16.	17.		Finals W&M
	22.–24.	Fri–Sun	Saalbach	AUT	24.	22.				Finals W&M
TOTAL RESORTS 21 / COMPETITIONS 45					13	8	11	13		
TOTAL SPEED / TECH.						21		24		

WOMEN											
Month	Date	Day	Site	Nation	DH	SG	GS	SL	TC	Remarks	
October 23	28.	Sat	Sölden	FIS/AUT			28.			Opening W&M	
November 23	11.-12.	Sat-Sun	Levi	FIN				11./12.			
	18.-19.	Sat-Sun	Zermatt-Cervinia	SUI/ITA	18./19.					Speed opening	
	25.-26.	Sat-Sun	Killington	USA			25.	26.			
December 23	02.-03.	Sat-Sun	Tremblant (TBC)	CAN			02./03.				
	08.-10.	Sat-Sun	St. Moritz	SUI	09.	08./10.					
	16.-17.	Sat-Sun	Val d'Isère	FRA	16.	17.					
	21.	Thu	Courchevel	FRA				21.		Night event	
	28.-29.	Thu-Fri	Lienz	AUT			28.	29.			
January 24	06.-07.	Sat-Sun	Kranjska Gora	SLO			06.	07.			
	13.-14.	Sat-Sun	Zauchensee	AUT	13.	14.					
	16.	Tue	Flachau	AUT				16.		Night event	
	20.-21.	Sat-Sun	Jasna	SVK			20.	21.			
	26.-28.	Fri-Sun	Cortina d'Ampezzo	ITA	26./27.	28.					
	30.	Tue	Kronplatz	ITA			30.				
February 24	03./04.	Sat-Sun	Garmisch-Partenk.	GER	03.	04.					
	10.-11.	Sat-Sun	Soldeu	AND			10.	11.			
	16.-18.	Fri-Sun	Crans-Montana	SUI	16/17.	18.					
	24.-25.	Sat-Sun	Val di Fassa	ITA		24./25.					
March 24	02.-03.	Sat-Sun	Kvitfjell	NOR	02.	03.					
	09.-10.	Sat-Sun	Åre	SWE			09.	10.			
	16.-17.	Sat-Sun	Saalbach	AUT			17.	16.		Finals W&M	
	22.-23.	Fri-Sat	Saalbach	AUT	23.	22.				Finals W&M	
TOTAL RESORTS 22 / COMPETITIONS 45							12	11	11	11	
TOTAL SPEED / TECH.							23	22			

1.1.2 STARTING TIMES

The 2023-2024 starting times table is developed in collaboration with both chief Race Directors, the LOC/NSAs and Host Broadcasters. The final version of the starting times table is sent by your respective international Rights holder and at disposal from FIS after the FIS Technical committee meetings (26th to 29th sept 2023).



1.1.3 BROADCASTERS CONTACTS

	Production	Point of contact	TV Director	NSA
AND	INFRONT	Daniela CALANDRA – Head of Winter Sports +39 348 703 83 85] Daniela.Calandra@infrontsports.com	Franco Scotton: franco.scotton@icloud.com Sandro Di Manincor: sandrodemanincor@gmail.com	Federacio Andorrana d'esqui – FAE https://www.fae.ad/
AUT	ORF	Gerald KÖGLER +43 664 817 81 52 gerald.koegler@orf.at	Michael Kögler: michael.koegler@orf.at Sepp Friedl: sepp@friedl.tv	ÖSV https://www.skiaustria.at/de
BUL	INFRONT	Daniela CALANDRA – Head of Winter Sports +39 348 703 83 85 Daniela.Calandra@infrontsports.com	Franco Scotton: franco.scotton@icloud.com Sandro Di Manincor: sandrodemanincor@gmail.com	Bulgarian Ski Federation https://www.bfski.com/
CAN	INFRONT	Daniela CALANDRA – Head of Winter Sports +39 348 703 83 85 Daniela.Calandra@infrontsports.com	Franco Scotton: franco.scotton@icloud.com Sandro Di Manincor: sandrodemanincor@gmail.com	Alpine Canada https://alpinecanada.org/
FIN	Finnish ski Association	Janne LESKINEN – CEO Ski Sport Finland janne.leskinen@skisport.fi	Jukka Ahonen: jukka.ahonen@yle.fi Joel Helenius (prod.): joel.helenius@videpe.fi	Finnish ski Association https://hihtoliitto.fi/en/front-page/
FRA	INFRONT	Daniela CALANDRA – Head of Winter Sports +39 348 703 83 85 Daniela.Calandra@infrontsports.com	Franco Scotton: franco.scotton@icloud.com Sandro Di Manincor: sandrodemanincor@gmail.com	FFS https://ffs.fr/
GER	DSV	Tim ANTWERPES – TV prod. +49 176 32 40 11 42 tim.antwerpes@deutscherskiverband.de	Michael Kögler: michael.koegler@orf.at Achim Hammer: achim@leoham.de	DSV https://www.deutscherskiverband.de/
ITA	INFRONT	Daniela CALANDRA – Head of Winter Sports +39 348 703 83 85 Daniela.Calandra@infrontsports.com	Franco Scotton: franco.scotton@icloud.com Sandro Di Manincor: sandrodemanincor@gmail.com	FISI https://fisi.org/
NOR	NRK		Havard Blekastad Almas: havard.blekastad.almas@nrk.no +47 41 45 23 27 Alvilde Vike (Prod): alvilde.vike@nrk.no Jaka Krivec: jaka.krivec@rtvslo.si	Norwegian ski association https://www.skiforbundet.no/
SLO	SLOTV	Tom TOMANIC – executive prod. Sports program. +386 41 71 57 07 tom.tomanic@rtvslo.si		Slovenian ski association https://sloski.si/
SUI	SRG	Beat ZUMSTEIN – Sport live prod. +41 79 247 02 64 beat.zumstein@srf.ch	Beni Giger: beni.giger@srf.ch	SWISS SKI https://www.swiss-ski.ch/
SUI	RTS	Julien BASZANGER julien.baszanger@rts.ch	Aurélien Vallotton: aurelien.vallotton@rts.ch	
SVK	TBA			
SWE	VIAPLAY	Joakim EKSTRAND – Head of Onsite Production, Viaplay Group joakim.ekstrand@viaplaygroup.com	Johan Bernhagen: johan.bernhagen@ncp-tv.com	Swedish ski Association https://www.skidor.com/
USA	US ski & snowboard association	Eric WEBSTER – Director of events eric.webster@usskiandsnowboard.org Allan CONNALL – Concom TV allan@concom.tv	Spence Volla: spence@echoent.com	USSA https://my.usskiandsnowboard.org/

1.1.4 DOWNHILL TRAINING BROADCASTING PROGRAM

Communicated training coverages plan:

“tests”: all camera positions are tested, lights, cuts, advertising opportunities.

“team-record”: a basic coverage is done for all start field, it might include fixed shoots, and not necessarily top to bottom, depending on intervals.

“Live”: Live condition coverage, top to bottom depending on intervals. All the start field or partially to be confirmed.

Month	Date	Site	Nation	Gender	DHTR1	DHTR2	DHTR3
November 23	11.–12.	Zermatt–Cervinia (TBC)	SUI/ITA	M	08: tests	09: team record till bib 40 approx.	10: LIVE till bib 40 approx.
	18.–19.	Zermatt–Cervinia (TBC)	SUI/ITA	W	15: tests	16: team record till bib 40 approx.	17: LIVE till bib40 approx.
December 23	01.–03.	Beaver creek	USA	M	28:	29:	30: tests
	08.–10.	St. Moritz	SUI	W		06: team record till bib 40 approx.	07: LIVE till bib40 approx.
	15.–16.	Val Gardena/Gröden	ITA	M		13: team record	14: live
	16.–17.	Val d’Isère	FRA	W		14: team record	15: live
	28.–29.	Bormio	ITA	M		26 : team record	27: live
January 24	13.–14.	Zauchensee	AUT	W		11: team record	12: live
	12.–14.	Wengen	AUT	M	9: tests/no pictures	10: team record till bib 40 approx.	11: LIVE till bib40 approx.
	19.–21.	Kitzbühel	AUT	M	16: tests	17: team record	18: live
	26.–28.	Cortina d’Ampezzo	ITA	W		24: team record	25: live
February 24	03.–04.	Chamonix	FRA	M		01: team record	02: live
	03.–04.	Garmish-Partenk .	GER	W		01: team record	02: live
	16.–18.	Crans-Montana	SUI	W		14. team record till bib 40 approx.	15: LIVE till bib40 approx.
	17.–18.	KvitFjell	NOR	M		15: tests	16: live
March 24	02.–03.	Kvitfjell	NOR	W		28: tests	01: live
	22.–23.	Saalbach	AUT	W		21: tests	22: live
	22.–24.	Saalbach	AUT	M		22: tests	23: live

1.2 EVENT DESCRIPTION

1.2.1 DOWNHILL

COURSE

VERTICAL DROP Women: 450–800 m
VERTICAL DROP Men: 750–1100 m

LENGTH women: 2500–2700 m
LENGTH Men: 2600–3500 m
 (Exceptionally over 4000 m)

GATES:

All gates (pole and panels) bright orange.

STARTS:

Downhill course is set from original start. Along the course is defined a series of reserve starts, up to 4, to guarantee a start of competition in case of challenging weather episode or access issue. All starts are equipped and ready to be activated in short notice.

TERRAIN:

The course should normally be approx. 30 metres wide, but some single narrow passages are part of the characteristics of the downhill and therefore pass the homologation. The course from top to bottom is a succession of steep, flat, wide, narrow sections, connected by lips, drop off and jumps.

SAFETY:

Due to terrain combined with high speed, some permanent and high safety protections are set along the course, it restricts the visibility of the course and the circulation.

SEQUENCING

OFFICIAL TRAINING:

Before the competition up to 3 official trainings are scheduled. An official training is ran on identical course. Each athlete at the start of the competition must start at least one training run. The entire facilities (start, course, safety on course and finish area) must be completely prepared and ready for racing by the first official training.

RESERVE START:

A reserve start can be activated in short notice the day of the competition. The time between the decision and start of competition is defined between the HB and the jury. It cannot be less than 30 minutes.

ATHLETE'S INSPECTION:

Prior to the official training or competition, all competitors have access with their respective team staff to the entire course for a "racer's inspection". Duration from 45 to 90 minutes.

COMPETITION:

A downhill will be carried out in one run. In case of 2 runs Downhill, the vertical drop will be revised according to the ICR.

STARTING ORDER & INTERVALS

STARTING ORDER:

From the current World cup starting list (WCSL) in downhill.

BIBS:

1 to 5: drawn from group WCSL 11 to 20
 6 to 15: drawn from group WCSL 1 to 10
 16 to 20: drawn from group WCSL 11 to 20
 21 to 30: drawn from group WCSL 21 to 30.
 Over30: according to the respective FIS points. Racers with more than 500 WCSL points are inserted after 16 or 30 (cf WC Rules)

INTERVALS:

Intervals are defined to find the best possible compromise between the course to cover, the world classification of the athletes, the weather challenges, and the total duration of the competition.

- competition and training intervals are different
- longer intervals can be allocated to the top athletes group.
- intervals are defined between the jury and the HB
- interval drafts with different starts and different weather scenarios must be discussed during the summer survey to optimize the coverage accordingly.
- intervals are written in the official race program, any changes on competition day must be communicated to the teams and different broadcasters.
- competition start interval cannot be shorter than the running time for the first 30 competitors.

Example of top event Men with running time 1'58"

1 to 5: 2'20" / 6 to 15: 2'40" / 16 to 20: 2'20" / 21 to 30: 2'20" / 31+: 1'30" / last 5: 2'

Example of top event Women with running time 1'30"

1 to 15: 2'20" / 16 to 30: 2'00" / 31+: 1'30" / last 5: 2'

1.2.2 SUPER G

COURSE

VERTICAL DROP Women: 400–600 m
VERTICAL DROP Men: 400–650 m

LENGTH women: 1800–2200 m
LENGTH Men: 1800–2600 m

COURSE SET:

Number of direction changes is minimum 6% of the vertical drop.

GATES:

Successively red and blue. Red being bright and, in some circumstances, substituted by an orange downhill gate panel.

STARTS:

As per Downhill competition, reserve start is defined, 1 reserve start, exceptionally 2, to guarantee a start of competition in case of challenging weather episode or access issue. All starts are equipped and ready to be activated in short notice.

TERRAIN:

The Super G competitions are mostly held on the downhill track. When Super G is not set on the Downhill track the course might be wider. Where the terrain allows it, jumps may be set.

SAFETY:

Due to terrain combined with high speed, some permanent and high safety protection are set along the course, it restricts the visibility of the course and the circulation.

SEQUENCING

FREE SKIING:

There is no training for Super G. to be confirmed by the Jury a free-skiing session can be scheduled the day before the competition. The entire facilities (start, course, safety on course and finish area) must be completely prepared and ready for the free skiing.

COURSE SET:

The Super G is set the day before the competition

RESERVE START:

A reserve start can be activated in short notice the day of the competition. The time between the decision and start of competition is defined between the HB and the jury. It cannot be less than 30 minutes.

ATHLETE'S INSPECTION:

Prior to the competition, all competitors have access with their respective team staff to the entire course for a "racer's inspection". Duration from 45 to 90 minutes.

COMPETITION:

A Super G will be carried out in one run.

STARTING ORDER & INTERVALS

STARTING ORDER:

From the current World cup starting list (WCSL) in Super G.

BIBS:

1 to 5: drawn from group WCSL 11 to 20
 6 to 15: drawn from group WCSL 1 to 10
 16 to 20: drawn from group WCSL 11 to 20
 21 to 30: drawn from group WCSL 21 to 30.
 Over30: according to the respective FIS points. Racers with more than 500 WCSL points are inserted after 16 or 30 (cf WC Rules)

INTERVALS:

Intervals are defined to find the best possible compromise between the course to cover, the world classification of the athletes, the weather challenges, and the total duration of the competition.

- longer intervals can be allocated to the top athletes group.
- intervals are defined between the jury and the HB
- interval drafts with different starts and different weather scenarios must be discussed during the summer survey to optimize the coverage accordingly.
- intervals are written in the official race program, any changes on competition day must be communicated to the teams and different broadcasters.
- competition start interval cannot be shorter than the running time for the first 30 competitors, for which their run must be shown entirely.

Example of top event Men with running time 1'08"

1 to 5: 2' / 6 to 15: 2'15" / 16 to 30: 2" / 31+: 1'30"

Example of top event Women with running time 1'30"

1 to 15: 2'15" / 16 to 30: 2'00" / 31+: 1'45"

1.2.3 GIANT SLALOM

COURSE

VERTICAL DROP Women: 250–400 m
VERTICAL DROP Men: 250–450 m

LENGTH women: 950–1400 m
LENGTH Men: 1100–1400 m

COURSE SET:

Number of direction changes is between 11% to 15% of the vertical drop in meters.

GATES:

Successively red and blue.

STARTS:

1 reserve start is defined to guarantee a start of competition in case of challenging weather episode or access issue. The reserve start is equipped and ready to be activated in short notice.

TERRAIN:

The terrain is undulating and hilly with a regular width of 40 metres. Exceptionally the width can be less than 30 metres, in this case, permanent safety system can be installed.

SAFETY:

The minimum safety installations is set with temporary 2 metres. high fences. If some permanent and high safety protection are set along the course, it restricts the visibility of the course and the circulation.

SEQUENCING

FREE SKIING:

To be confirmed by the Jury a free-skiing session can be scheduled the day before the competition. The entire facilities (start, course, safety on course and finish area) must be completely prepared and ready for the free skiing.

COURSE SET:

The 1st run is set the day before the competition, and exceptionally right before the Jury inspection on competition day if the weather did not allow it the day before. The 2nd run is set immediately after the last competitor of the 1st run.

RESERVE START:

A reserve start can be activated in short notice the day of the competition. The time between the decision and start of competition is defined between the HB and the jury. It cannot be less than 30 minutes.

ATHLETE'S INSPECTION:

Prior to the competition, all competitors have access with their respective team staff to the entire course for a "racer's inspection". Duration from 30 to 50 minutes.

COMPETITION:

A Giant Slalom must always be decided by two runs (women and men). The second run may be held on the same course, but the gates must be reset. Whenever possible, both runs should be held on the same day.

STARTING ORDER & INTERVALS

STARTING ORDER:

From the current World cup starting list (WCSL) in Giant Slalom.

BIBS:

1 to 7: drawn from group WCSL 1 to 7
 8 to 15: drawn from group WCSL 8 to 15
 16 to 30: WCSL list order.
 Over30: according to the respective FIS points. Racers with more than 500 WCSL points are inserted after 16 or 30 (cf WC Rules)

INTERVALS:

- run1 interval differ from run 2
- longer intervals are allocated to the top athletes group.
- intervals changes after TV breaks.
- intervals are defined between the jury and the HB
- interval drafts must be discussed during the summer survey to optimize the coverage accordingly.
- intervals are written in the official race program, any changes on competition day must be communicated to the teams and different broadcasters.
- competition start interval cannot be shorter than the running time for the first 15 competitors.

Example to adapt to the running time:

Run 1: 1 to 15 : 1'45"–2' / 16 to 22 : 1'30"–1'45" / 23 to 30: 1'15"–1'30" / 31+: 40"–50"

Run 2: 1 to 15: 1'30"–1'45" / 16 to 22: 1'45"–2' / 23 to 30: 1'50"–2'15"

1.2.4 SLALOM

COURSE

VERTICAL DROP Women: 140–220 m
Men: 180–220 m

LENGTH women: 500–600 m

COURSE SET:

Number of direction changes is between 30% to 35% of the vertical drop. (+/- 3)

GATES:

55 to 80 gates with a succession of horizontal, vertical and combination of gates. The combinations of gates are part of the specificities of a slalom set.

TERRAIN:

The terrain is undulating and hilly with sharp transitions with a regular width reduced to 25 metres if the Slalom is not combined with a GS. A slalom course includes steep sections (55 to 70%)

SAFETY:

Safety system can be reduced to fences 1,2 m high if the distance from public and other obstacles is given.

SEQUENCING

FREE SKIING:

To be confirmed by the Jury a free-skiing session can be scheduled the day before the competition. The entire facilities (start, course, safety on course and finish area) must be completely prepared and ready for the free skiing.

COURSE SET:

The 1st run is set the day before the competition, and exceptionally right before the Jury inspection on competition day if the weather did not allow it the day before. The 2nd run is set immediately after the last competitor of the 1st run.

ATHLETE'S INSPECTION:

Prior to the competition, all competitors have access with their respective team staff to the entire course for a "racer's inspection". Duration from 30 to 50 minutes.

COMPETITION:

A Slalom must always be decided by two runs (women and men). The second run may be held on the same course, but the gates must be reset. Whenever possible, both runs should be held on the same day.

VIDEO CONTROL:

The video control set up and access to slow motions in Slalom remain operational until the end of the protest time.

STARTING ORDER & INTERVALS

STARTING ORDER:

From the current World cup starting list (WCSL) in Slalom.

BIBS:

1 to 7: drawn from group WCSL 1 to 7

8 to 15: drawn from group WCSL 8 to 15

16 to 30: WCSL list order.

Over30: according to the respective FIS points. Racers with more than 500 WCSL points are inserted after 16 or 30 (cf WC Rules)

INTERVALS:

The intervals are irregular in Slalom. The chief of timing and calculations or assistant tells the starter when each competitor should start, in agreement with the TV director or Assistant. The competitor on the course need not have passed the finish line before the next competitor starts.

- theoretical intervals are given to structure the run and give the rhythm of the broadcast
- run1 interval differ from run 2.
- longer intervals are allocated to the top athletes group.
- intervals changes after TV breaks.
- intervals are defined between the jury and the HB
- interval drafts must be discussed during the summer survey to optimize the coverage accordingly.
- intervals are written in the official race program, any changes on competition day must be communicated to the teams and different broadcasters.
- competition start interval cannot be shorter than the running time for the first 15 competitors.

Example to adapt to the running time:

Run 1: 1 to15: finish +30"-45" / 16 to 30: finish +20"-30" / 31+: finish

Run 2: 30 to 16: finish +25"-40" / 15 to 9: finish +40"-50" / 8 to 4: 45"-50" / 3 to 1: finish +50"-75"

1.2.5 TEAM COMBINED

COURSE

VERTICAL DROP, LENGTH, COURSE SET:

refer to Downhill/super G and Slalom up above in the respective gender.

TERRAIN:

The speed run, Downhill or Super G, and the Slalom run are not necessarily taking place on the same course. The allocation of courses must be agreed between FIS Chief Race director, LOC and National ski Association.

SAFETY:

refers to the respective event.

SEQUENCING

COURSE SET:

The 1st run is set the day before the competition, and exceptionally right before the Jury inspection on competition day if the weather did not allow it the day before. The 2nd run is set immediately after the last competitor of the 1st run.

ATHLETE'S INSPECTION:

Prior to each of the run, all respective competitors have access with their team staff to the entire course for a "racer's inspection". Duration from 30 to 50 minutes.

COMPETITION:

- One Team equal one competitor running the speed event, one competitor running the slalom.
- Each competitor is allowed to start only in one run, and only for one team. The competitors that make up the team (teammates) must be named before the draw by the team captain. No changes can be done after the draw.
- A Team Combined must always be decided by two runs.
- The Combined results are calculated by adding the run times of the teammates of both runs.

VIDEO CONTROL:

The video control set up and access to slow motions in Slalom remain operational until the end of the protest time.

STARTING ORDER & INTERVALS

STARTING ORDER RUN 1:

Unless the weather conditions force the Jury to change the program, the first run of the "Team combined" competition is the speed run, held under DH/SG starting order regulations.

STARTING ORDER RUN 2:

Starting numbers given to the team for the 1st run remain the same for the 2nd run. The starting order for the second run is determined by the result list of the 1st run except for the first 30 places who will start in reversed order.

INTERVALS:

- **Run 1:** refer to Downhill and Super G intervals.
- **Run 2:** according to the run 2 starting order, the intervals might be more regulars all along the first 30 competitors. The TV Director shall decide to extend the intervals in case of new leader or other stories.



2. PRODUCTION & COVERAGE

2.1 PRODUCTION STANDARD

2.1.1 VIDEO

The FIS Alpine Ski World Cup production standard refers to the general part of the FIS World Cup Broadcast manual. As precision the standard is high definition (HD) 1080i50 HD-SDI, 16:9 format for the multilateral.

FIS aim for innovation and use of latest generation of digital equipment for all productions.

Plans to produce with last high technology standard such as UHD-SDR or UHD-HDR must be done in collaboration with FIS and RHs for best preparation possible of distribution and TV animations and graphics.

2.1.2 AUDIO

The Audio standard refers to the general part of the FIS World Cup Broadcast manual. As mentioned, the international signal is not including voice or commentary in any language. This point paragraph might be reviewed in the context of projects to use teams and officials' communications in various broadcasts. The Host broadcasters will be consulted for tests and development during the current season.



2.1.3 MULTILATERAL BROADCAST SPECIFICATIONS

ALL EVENTS

Objectivity

In general, the impartiality of the multilateral feed remains above all. Regarding Alpine competition and its restricted time given per athlete, to provide audiences with facts and stories, the production needs to have capacities to record part of all runs and moment outside the run, at any time to insert it back in the program at the appropriate time.

Authenticity

For an authentic and genuine representation of the action, and the competition between athletes, the production guarantees the entire course coverage with multiple different angles on decisive sections, and the coverage of the athletes right before and after their respective run.

Informative

The broadcast provides reliable and factual data to enhance the viewing and the understanding of the audience. The broadcast keeps the audience well informed about the competition and Live background information. It should offer meaningful insights into strategy, tactics and player performance.

Continuity & variety

The continuity between runs to allow comparisons find its sense mostly in decisive passages. Outside these passages, diversities are awaited and must be dictated by the live stories, emotions, new insights and race facts.

Non-sport contents

The live sport action is the priority, however, in the story the insert of non-directly sport related can be possible:

- Athletes' family
- VIPs, only if those are internationally recognizable
- FIS and NSA officials.
- Fan clubs.

Unless long interruption, no graphics should be used for these scene, with the exception of FIS officials. The restrictions concern the following points and are not to be shown in the multilateral feed:

- Political messages and protests
- Violent behave and fights between people
- Privacy

SPEED EVENTS

Terrain feature recognition

The coverage plan must make the course characteristics visible, such as extreme inclines, transitions, high speed turns, the plan of the snow and 'personality' of the mountain. An appropriate use of camera towers and other elevation over the course will allow these perspectives. In case the skier, or ski boots of the skier are not visible for a short moment in order to give relief, the production must guarantee to deliver the missing section of the complete skier from another camera in the replay.

Terrain & safety restrictions

Appropriate camera towers and platforms to gain elevation over the course, safety and other competition personnel, have to be inserted in the plan. This includes the finish line approach and crossing.

Speed and race lines

The speed as main characteristics must be transcribed to the screen with appropriate camera and cut. Use of drone, minicam on snow or other still shots are part of the actual standard. The combination with speed data on graphics is the final tuning. The visible differences between competitors race line are another main characteristic of downhill; an appropriate camera set up in decisive sections must allow the comparison possible.

Intermediate time

Must fit with the cuts plan as the speed, time and jump data are remaining minimum 3 seconds after data come on screen. The positions are defined together between head of timing and TV director or his assistant.

Jumps

Each Downhill should have identified jumps were the skiers have to prepare themselves and deploy best skills to pass over. The well-known jumps must be covered from different angles and perspectives and with an independent slow-motion source.

Mistakes & falls

In downhill the mistakes are often leading to falls. Subject to the severity of the incident, the TV director and his assistance will follow the "fall and crashed policy" detailed in following section 3 in the procedures and communication.

On board data

The use of a timing and speed sensor for all competitors must be announced during the summer survey in order to adapt all the TV graphics to the Live cuts plan.

TECHNICAL EVENTS

Terrain feature recognition

The coverage plan must make the course characteristics visible, such as extreme inclines, transitions, traverses, flats sections and 'personality' of the mountain. An appropriate use of camera towers and other elevation over the course will allow these perspectives. In case the skier, or ski boots of the skier are not visible for a short moment in order to give relief, the production must guarantee to deliver the missing section of the complete skier from another camera in the replay.

Safety distance restrictions

In GS and SL the safety being given mostly by the distance between race line and fences, only appropriate cameras and tower positions will offer the awaited visibility of the technic and race lines.

Technic and race lines

The technic and rhythm through the gates as main characteristics must be transcribed to the screen with appropriate camera and cuts. Some singular sections must be identified and selected to be broadcasted with the right angle in order to make the differences between competitors visible.

Intermediate time

Intermediate time must correspond to start and end of a section or combination of sections. The positions are defined together between head of timing and TV director or his assistant. Intermediate times are located at a gate.

Speed and velocity

The use of drone is foreseen especially in fast and gentle section. The use of minicam on snow is part of the actual standard.

Video control

In slalom the video control is used as gate judging tool instantly by jury for suspicion of false gate passage or on demand by the jury. This requires the production to have, at each single gate, a minimum of 2 camera sources for the replay.

INTERVALS CONTENTS

Base

The intervals between competitors are the unique moments to feed the story telling with all contents available, this time needs also to cover some essential time, which limits the editorial opportunities. From 20 to 75 additional seconds, this gap depends on the group of competitors and the event.

Essentials

- Starting gate: for all competitors the moment when she/he is opening the starting gate is an obligation to show Live or recorded.
- Finish line: if, the moment when the skier is slowing down is shown Live all along (7 to 12 seconds), it cannot be covered with a single camera.
- Reaction: close-up on competitor stopped in the finish area, skis on or off, is an essential.
- Leaderboard: a short reaction of the leader can be inserted in the interval Live or in the replay sequence. A longer scene of the leader must be displayed with the graphic (name's line).
- Slow motion: from 1 up to 5 scenes, the slow motions are used to replay a single action, a series of actions of the athlete, a mistake, one or more reactions including those from the coach, the service staff, the leader, the team.

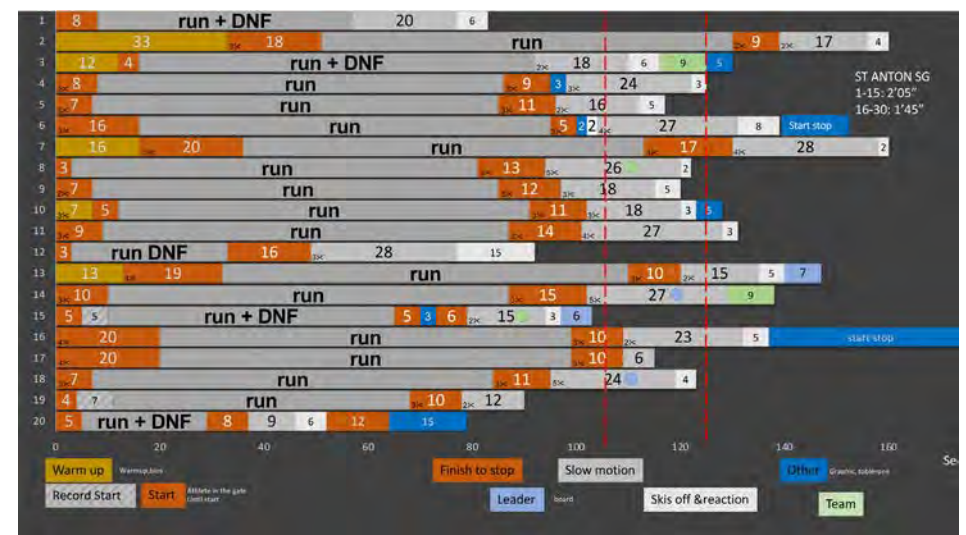
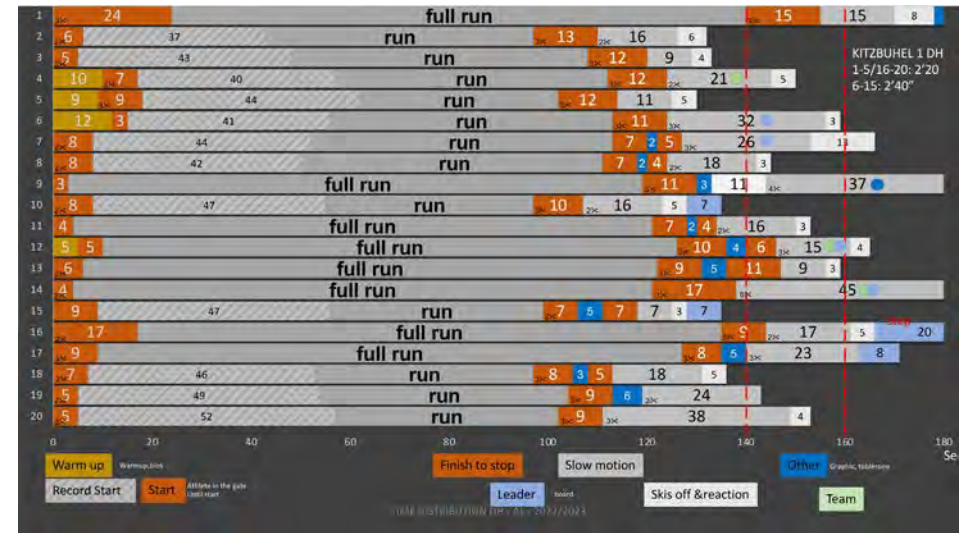
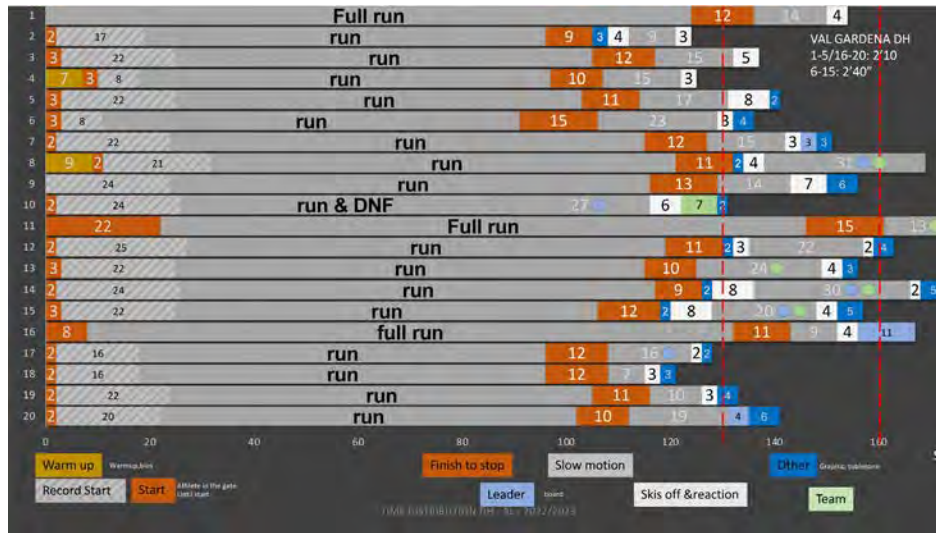
Cf examples of time distribution here below.

Record start

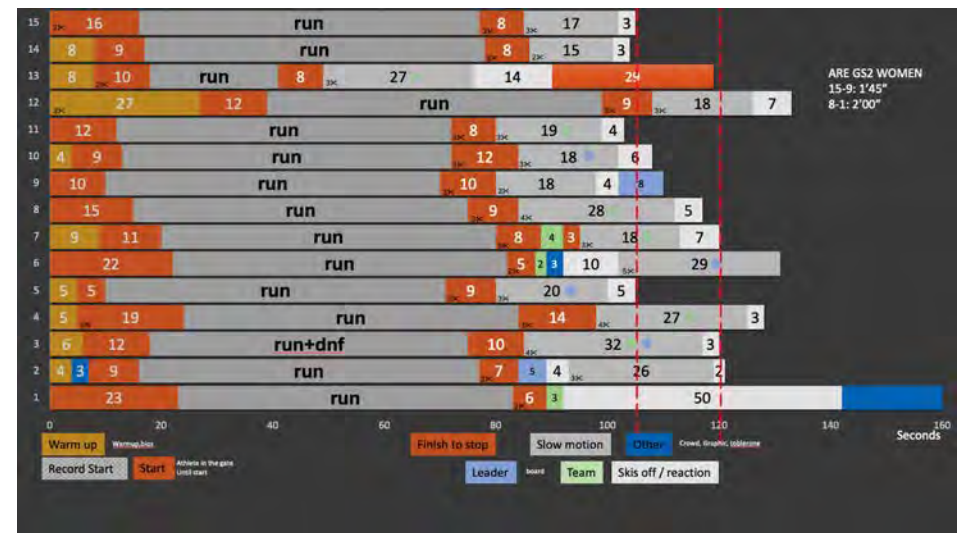
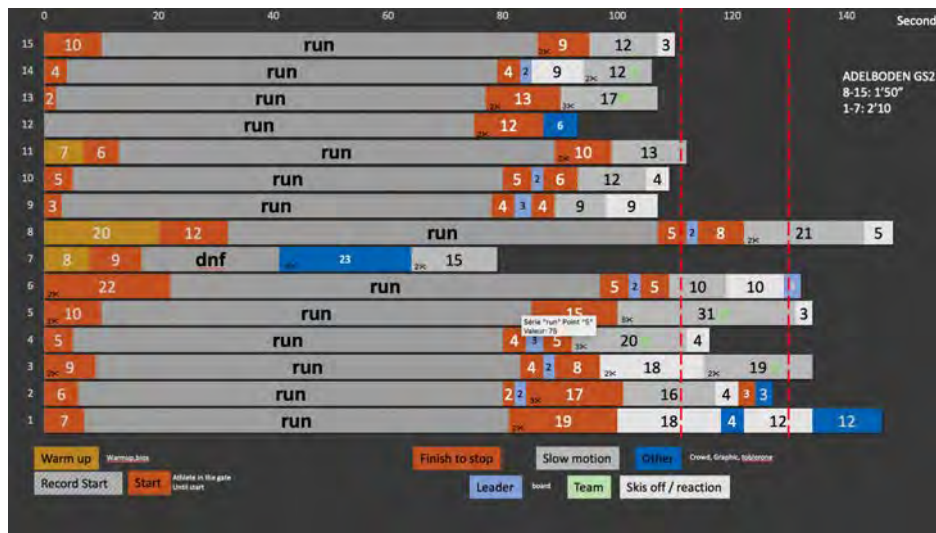
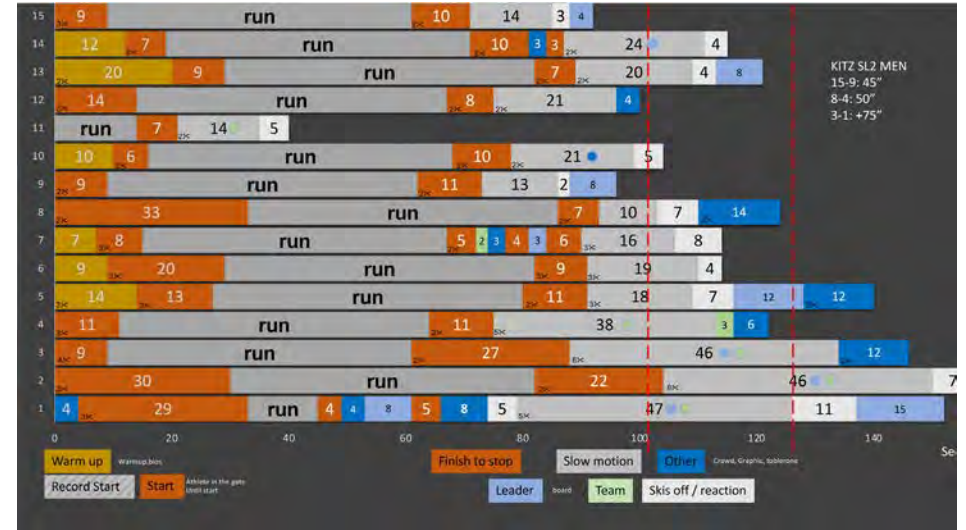
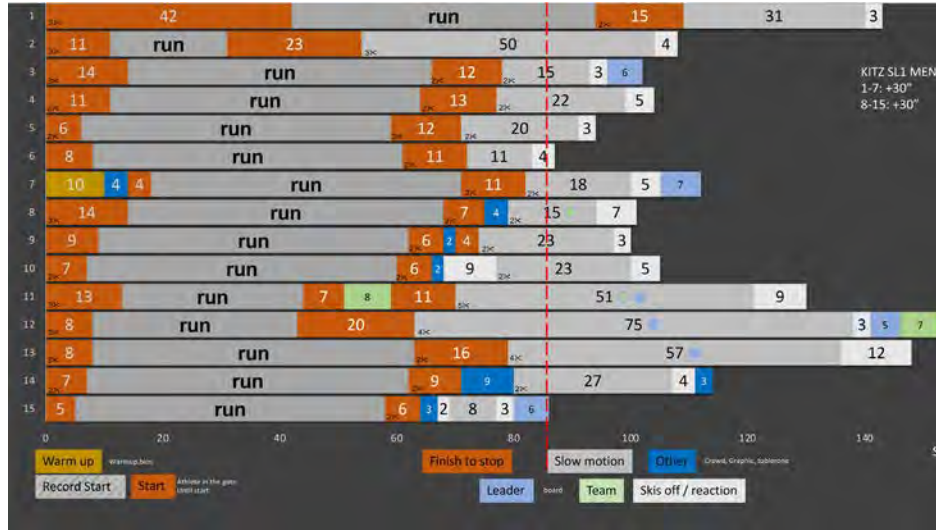
I in case the fixed interval needs to be stretched, it's essential that the TV production can record instantly the start to save the time lost. (Refers to the "recordings" paragraph)



Examples of Interval time distribution in seconds during the season 2022-2023. Bib 1 to 20 in DH/SG, last 15 for GS/SL



Examples of Interval time distribution in seconds during the season 2022-2023. Bib 1 to 20 in DH/SG, last 15 for GS/SL



2.2 COVERAGE

2.2.1 BROADCAST AREAS

START AREA	
zones	coverage
<p>warm up zone: zone where the competitors, the team officials and the service men are together preparing the competition run. The HB together with LOC define the access to the zone, the pathway to the start zone and the placement of the TV monitor.</p>	<ul style="list-style-type: none"> — The TV production makes a preselection of athletes and officials they must cover as minimum content. — The access to this zone is under the scope of cameras — Interactions between competitors are sought — Interactions between competitors and coach are sought — Interactions between competitors and service men/women are sought — Reaction from Officials in front of the Live TV monitor — For best opportunities and control of privacy respect, these scenes can be taped.
<p>Start hut / tent: in this area the HB together with the LOC have to make sure the space is appropriate to competitors accompanied with 1 service staff + 1 coach. The LOC can control and regulate the access. Unilateral Broadcasters have a restricted access to this zone.</p>	<ul style="list-style-type: none"> — The tent/hut must be equipped with video lights quality — The event dressing is upmost (no cable, no material) — The background can be equipped with TV monitors or LED wall or advertising materials, in this case the content must fit with current marketing rules and approved by the rights holder.
<p>Start gate: the skier is ready to start, put his poles in position and pull forward to enter the course and open the start timing stick.</p>	<ul style="list-style-type: none"> — The start of the athlete's race must be shown in all cases for all events, not necessarily shown live. TV production is ready to record the live start and insert it as an item from video disk/videotape before cutting to live pictures during the race. This applies particularly when the start intervals are short and/or the previous competitor deliver contents and takes the lead in the storytelling priorities. — The start gate scene must be covered from the front side and the back side as well. — A close-up solution to be used partially is upmost.
<p>Start facade: the facade and wings with advertising is a key recognizable structure.</p>	<ul style="list-style-type: none"> — Start facade must be covered by 2 different angles minimum — All marketing material from the start must be considered — Pole cam solution is part of the actual standard — Competition trophy set up right below can be used as cutaway from finish to start scenes, but not systematically. In this case the "trophy" must be presented in the best way, not covering the facade advertising, and under validation of FIS and the TV director. Mascots shall not replace the official trophy. — In case of start LED wall installation, an appropriate camera set up must be planned to get proper visibility of the wall and animations. (ref. demo last season in Kransjka Gora / ref. Kitzbühel Downhill.



Facade and trophy example

COURSE	
zones	coverage
Race track / Race hill:	<ul style="list-style-type: none"> — Aerial or global view of the hill is part of the standard and upmost — The HB together with the LOC deal with a skilful skier to record an “onboard” camera shot all along the course; the so called “POV”. The unilateral Broadcasters can insert their POV skier in the program. — The POV set up is confirmed by the jury, especially when the POV is done by a group of skiers or a drone (refer to UAV specifications) — Digital course presentation: if a digital course presentation is available, the HB together with FIS will confirm where the scene will be inserted in the running order. — Start of competition: when starts the competition, the course coverage starts with slightly wider shots to present the hill in a more understandable way; after couple of competitors the broadcast enters its proper philosophy.

FINISH	
zones	coverage
Finish line: the finish line and the arch make together an important feature of the alpine competition.	<ul style="list-style-type: none"> — The finish line crossing is done with a dynamic shot adapted to the terrain and course set, ideally with a crane in GS/SL. — In case the finish arch is obstructing the view of a gate combination from the main camera angle (quite often in slalom), the TV production can deliver another camera source for replays and video control.
Coral: in general, the finish line together with the coral, where the skier is slowing down and stop, requires multiple camera angles and captures.	<ul style="list-style-type: none"> — From finish line to complete stop with multiple cut options if the sequence is too long. The multiple cut must consider the finish line graphics with sectors time analysis. — Athlete reaction: from outside the coral while the competitor is watching the board or crowd, and from inside with a camera free to move and accompany the athlete in her/his reactions and moves.
team corridor: for team reaction and interactions, the restricted team corridor is under the scope of the camera plan.	<ul style="list-style-type: none"> — Team staff reaction is not a must. — Prefer teammates reactions or interactions.
public	<ul style="list-style-type: none"> — Fans and crowd cheering is upmost. — Country fellows and/or fan club must be sought
Equipment tent control	<ul style="list-style-type: none"> — The coverage of the finish area tent is only possible under agreement from FIS and LOC to respect and control the necessary privacy of the competitors and other officials.



LEADER BOARD	
zones	coverage
Leader board:	<p>The leader board is located between the mixed zones and the exit gate of the racecourse. The leaderboard consists of a seat and an official backdrop. Here the specifications of the leader board:</p> <ul style="list-style-type: none"> — The coverage is permanent. — For more reactions opportunities TV production is ready to record the Live leader board camera and insert it in the replays sequence. — An interaction with other athlete right at the corner of the leader board cannot be covered by the fixed framed leader board camera. — Dedicate Audio capture must be set up (cf 2.5 AUDIO) <p>In some circumstances the backdrop can equipped with LED to display advertising and also photo and/or messages. In case of LED uses, the scripts are approved by the RHs and marketing RHs.</p>

TEAM ZONE	
zones	coverage
start:	<ul style="list-style-type: none"> — Refers to “start area” section.
Course: where coaches corner and/or coaches tower are set along the course, the TV team has to quickly identified where are the head coaches or personal coach of athletes.	<ul style="list-style-type: none"> — From “on course” camera plan — Head coaches, service staff, personal staff shown frequently during programs should be shown sometimes with free text graphic to identify them. To be done in the pre-opening program or interviews or during interruptions. — To be consistent, the coaches caught on the international signal should be the ones interviewed in the various unilateral feeds or media. — Any relevant reaction from other teammates will come then as replay.
Finish area:	<ul style="list-style-type: none"> — Refers to “finish” section and “team corridor” Alinea.



TEAM HOSPITALITY	
zones	coverage
<p>Team hospitality: spaces are set up for athletes and selected team mates to let them wait in a warm and comfortable place.</p>	<ul style="list-style-type: none"> — The coverage of the team hospitality is possible under agreement from FIS and LOC to respect and control the necessary privacy of the competitors and other officials

TEAM CAPTAIN MEETING	
zones	coverage
<p>Team captain meeting:</p>	<ul style="list-style-type: none"> — The coverage of the team captain meeting is possible under agreement with FIS, LOC and the national ski association.

PUBLIC DRAW & CEREMONIES	
zones	coverage
<p>Public draw: the public draw of starting number can be scheduled and organized by the LOC the day before the competition. It concerns the Top10 in speed events, and top 15 in technical events of the current World cup starting list (WCSL).</p>	<ul style="list-style-type: none"> — For the Multilateral broadcast the public draw can be recorded and taped in the pre-opening sequences. — The interactions between competitors and the public are sought. — The access to the green room must be allowed by FIS — The event can be covered by a unilateral broadcaster. A provisional program should be announced during the summer survey and confirmed as early as necessary.
<p>ceremonies: evening awards are often combined with a public draw. Competition awards on race day are held in the finish area right after the race.</p>	<ul style="list-style-type: none"> — Evening ceremonies: refers to the public draw set up. — In addition, the flag ceremony and national anthem audio must be covered. — Finish area ceremonies: the TV production keeps enough operators to cover the ceremony with high quality broadcast. — The ceremony post-race starts after the unilateral interview. The countdown is announced by FIS and displayed on timing/data scoreboard.

2.2.2 CAMERA PLANS

DISTRIBUTION

The 1st plan is given by the distribution of the camera along the different broadcast areas and their respective standard of coverage up above. Here some additional inputs about the camera distribution.

START AREA: ZONE

Start tent and warm up zone cannot be covered by the same camera for the entire competition.

The dressing of the inside part of the tent should be focused on one side; the camera staying always on the same side.

Pole cam, used for start close-up and start, is part of the actual standard. It cannot replace the general view of the start structure.

COURSE DH/SG

Terrain characteristics priorities: from past experiences and consideration of sport facts, some sections must be covered with multiple angles and cameras for better respect of the broadcast specificities mentioned above. With respect of the current topography, the HB with the support of the LOC must be prepared to build a series of towers, sometimes with high elevation and occasionally above the permanent safety system.

Jumps: well-known jumps must be covered by multiple angles and cameras. Crane camera is part of the standard.

Speed: for better visibility of the speed, gliding sections are covered by aerial shots, still shots, drone shots, crane shots.

The most famous sections must be recognizable on TV from the audience.

The feet and skis are not always necessarily visible to give hill's relief in the broadcast. In this case, the moment when the part of the body is not visible is covered by another camera to be used in replays or control.

Intermediate times: according to speed and technical event specificities up above.

Test events: when a World cup downhill is planned for the first time on a hill, a survey on snow with expected course set is mandatory. It must be followed by ski tests to be watched by the TV director or/and assistant. For the World Ski Championships, a World Cup class event must be held before.

Super G distribution: if the downhill camera distribution can fit for the Super G, for better respect of the broadcast specificities of Super G the TV production can review the nature of the cameras and the cuts.

COURSE GS

In case of GS events following a DH/SG event, the HB must adapt the distribution according to the technical event specificities. In this case the HB production team and the LOC must be ready for some logistic work in short notice. This has to be discussed and planed during the summer survey.

Race lines: due to the width of the racetrack and to the different safety systems, building towers, sometimes with high elevation, offers solutions to respect the broadcast specificities of GS/SL. Succession of similar point of views on snow is not foreseen.

Speed: for better visibility of the speed some sections are covered by drone shots, crane shots and still shots.

COURSE SL

SL specification: the HB must adapt the distribution according to the SL course set specificities. In case of course set following a GS event, the HB production team and the LOC must be ready for some logistic work in short notice.

SL course set: the TV production must be ready to proceed to adjustments during the 2nd run course set (handheld cameras).

Gates passing in SL, each gate must be covered by at least 2 camera sources.

SL race lines: due to the width of the racetrack and to the different safety systems, building towers, sometimes with high elevation, offers solutions to respect the broadcast specificities of SL. Succession of similar point of views on snow is not foreseen.

Speed: for better visibility of the speed some sections are covered by, crane shots and still shots (minicam on snow/in gate camera), and drone shots.

FINISH AREA

Finish line and coral cannot be covered by the same camera for the entire competition.

From finish line it can take 10 to 12 seconds before the first athlete reaction.

The advertising dressing should be focused on one side (inflatables).

Crane at finish line is part of the actual standard.

The leader board camera stays in position all along the competition
The leader board should be covered from a second angle if possible.

The handheld/Gimbal camera in the coral accompanying the racer for reaction must be wireless, for safety and functionality reason.

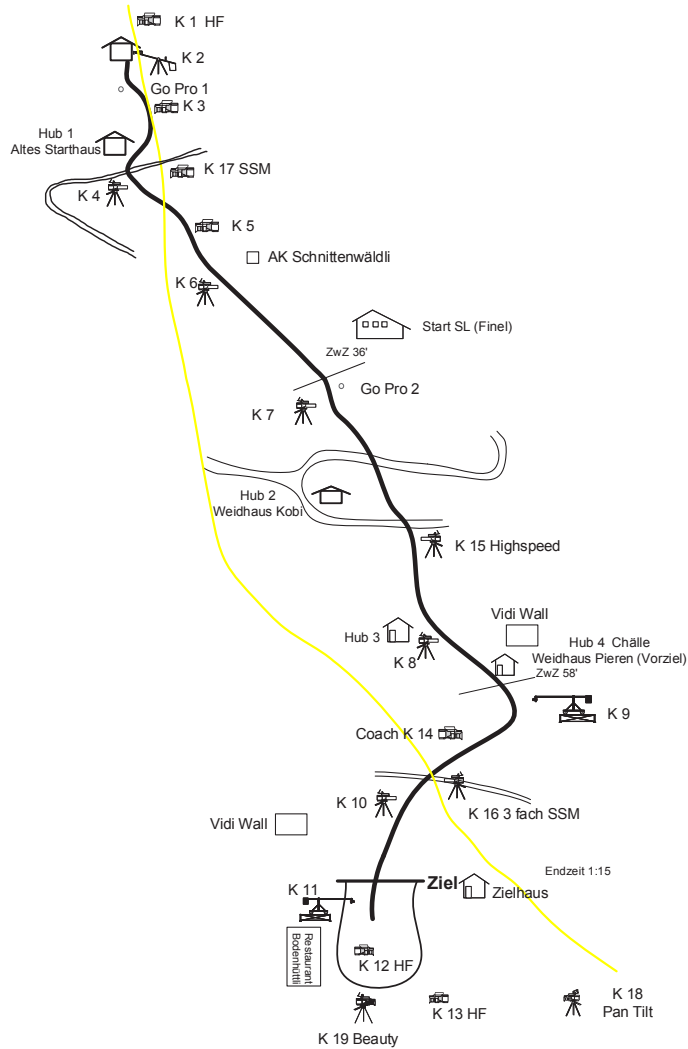


CAMERA PLAN SOLDEN Giant Slalom 2023

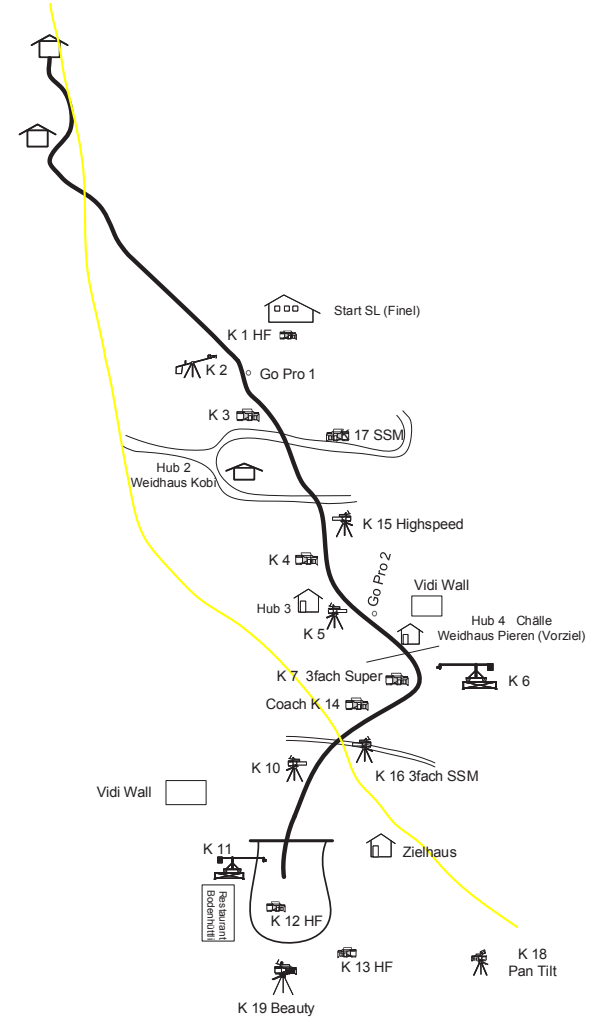


These plans are given for information only from the respective host broadcasters, the final version might differ from what's presented here.

CAMERA PLAN ADELBODEN Riesenslalom 2022

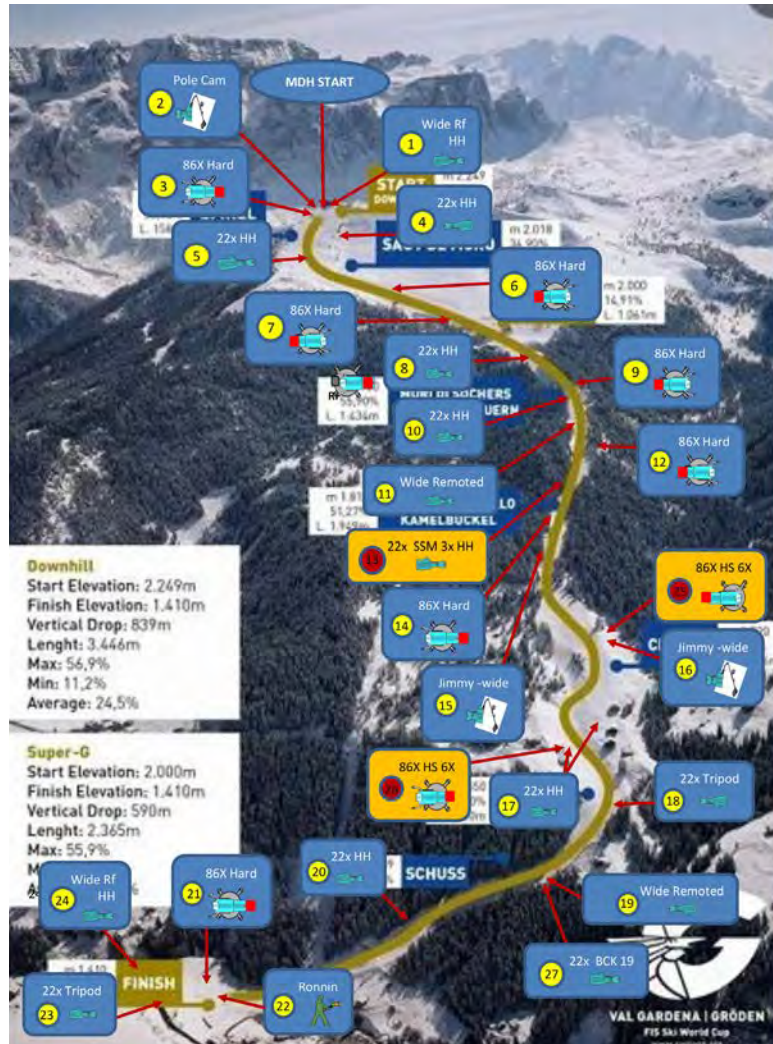


CAMERA PLAN ADELBODEN Slalom 2022



These plans are given for information only from the respective host broadcasters, the final version might differ from what's presented here.

CAMERA PLAN VAL GARDENA FIS Alpine Ski World Cup 2023-24



These plans are given for information only from the respective host broadcasters, the final version might differ from what's presented here.

Camera requests

MDH - CAMERAS REQUIREMENT (28 cameras overall)				
Nr. Camera	Lens	Camera	Tripod	Note
1	Wide	Sony FS5	Ronin	
2	Wide	Polecam	Crane	System Provided by Infront
3	86x	Hard	Hard Tripod	
4	22x	H,H	No	
5	22x	H,H	Light Tripod	
6	86x	Hard	Hard Tripod	
7	86x	Hard	Hard Tripod	
8	22x	H,H	Light Tripod	
9	86x	Hard	Hard Tripod	
10	22x	H,H	No	
11	22x/Wide	H,H	Remoted System	System Provided by Infront
12	86x	Hard	Hard Tripod	
13	22x - SSM 3x	H,H	No	
14	86x	Hard	Hard Tripod	
15	Wide	H,H	Jimmy Jib System	System Provided by Infront
16	Wide	H,H	Jimmy Jib System	
17	22x	H,H	Light Tripod - Tbc	
18	22x	H,H	Light Tripod - Tbc	
19	22x/Wide	H,H	Remoted System	System Provided by Infront
20	22x	H,H	No	
21	86x	Hard	Hard Tripod	
22	Wide	Sony FS3	Roning System	
23	22X	H,H	Light Tripod	
24	22X	H,H - RF	No	
25	86x - SSM 8x	Hard	Hard Tripod	
26	86x - SSM 8x	Hard	Hard Tripod	
27	22X	H,H	No	
28	DRONE			Provided by Infront

CAMERA PLAN ST. ANTON Downhill 2023

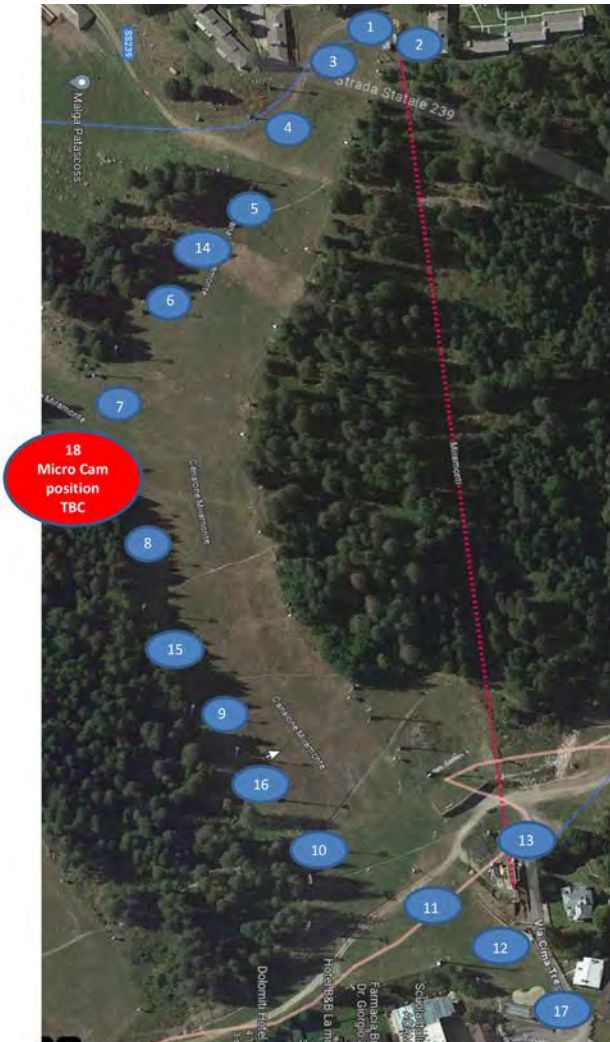


CAMERA PLAN ST. ANTON 2021



These plans are given for information only from the respective host broadcasters, the final version might differ from what's presented here.

CAMERA PLAN CAMPLIGLIO FIS Alpine Ski World Cup 2023



These plans are given for information only from the respective host broadcasters, the final version might differ from what's presented here.

Camera requests

MSL - CAMERAS REQUIREMENT (17 cameras overall + Micro Cam)				
Nr. Camera	Lens	Camera	Tripod	Note
1	Wide	Sony FS5	Ronin System	RF System
2	Wide	H.H	No	
3	Wide	Pole cam	Crane	Provided by Infront
4	22x	H.H	Light Tripod	
5	22x	H.H	No	
6	22x	H.H	No	
7	Wide	H.H	Jimmy Jib System	Provided by Infront
8	22x	H.H	No	
9	22x	H:H	No	
10	Wide	H.H	Jimmy Jib System	Provided by Infront
11	Wide	Sony FS5	Ronin System	RF System
12	22x	H.H	Light Tripod	
13	Wide	H.H - RF	No	RF System
14	22x SSM 8X	H.H	No	
15	22x SSM 3X	H.H	No	
16	86x SSM 8x	Hard	Hard Tripod	
17	86x	Hard	Hard Tripod	
18	Wide	Micro Atom one		

2.2.3 SLOW MOTION PLANS

An additional camera plan is given by the slow-motion concept, using multiple sources and dedicated structure.

CONCEPT

The TV director and his/her team plan ahead to identify crucial moments that may require a slow-motion replay. Slow motions add drama and intensity to the broadcast.

- The crucial moments include: a gate passing, an impressive recovery, a mistake, a reaction.
- Other aesthetical moments are the same importance: ski technique, jumps, start, finish line crossing
- A complete concept requires the use of more than 1 Super/hyper slow-motion source.
- A multi-angle approach provides a comprehensive view of the event.
- 1 up to 5 scene/angles
- Replays of falls must be done according the “falls cover” policy (cf chapter 3)

DISTRIBUTION

To fit with the slow-motion concept the complete track needs to be covered, and all coverage cameras must be available on replay. Raw emotions of skiers, the precision of their movements and the fine margins that can determine the outcome of the competition must be available on replays when it comes. To be in the inputs:

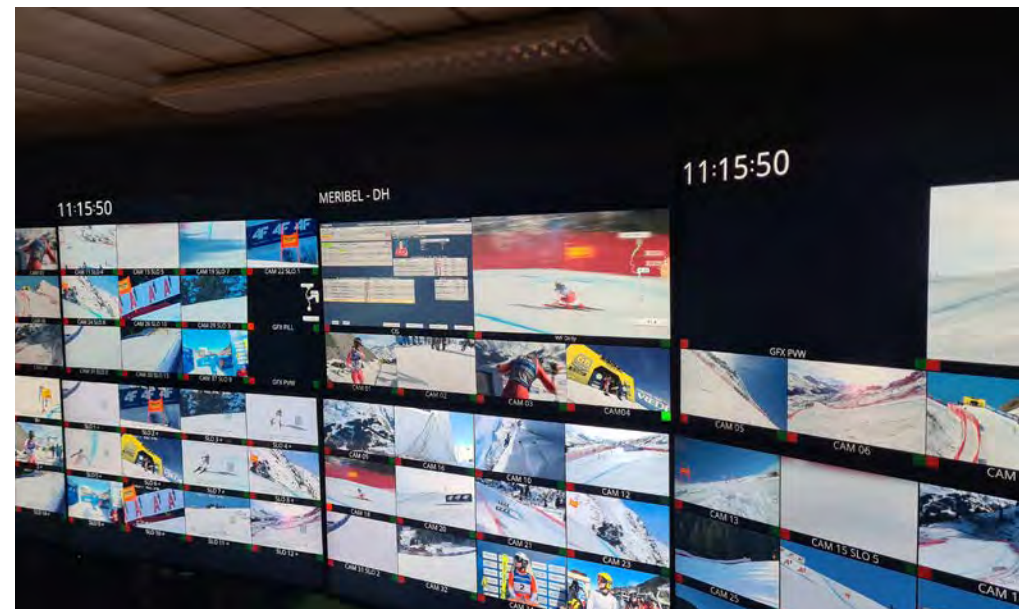
- The start gate
- The complete Live coverage on course.
- Additional slow-motion cameras strategically placed at different angles around the course to capture the same moment from various perspectives.
- 1 SSM per critical and decisive section. A super slow motion must be minimum triple speed.
- The finish line
- The finish area
- The leader board
- The Team zone (coach preferably).

Hi-Motion cameras, minimum six-speed, may in principle not replace the requirements for SSM (triple speed) cameras but be additional.

OPERATION

In order to deliver the replays according plans and expectations a sufficient number of operators and operator positions is necessary.

COMPLEMENTARY SPECIFICATIONS	
Operators & channels	<ul style="list-style-type: none"> — Solid experiences of sport with short start intervals, preferably Alpine experience are upmost. — EVS team operators must combine the sense of aesthetics and the knowledge of the Alpine technical criteria. — The number of operators should fit with the coverage and must be presented together with the camera plan — The number of channels is given by the global concept.
Wipe	The slow-motion transition wipe given by FIS must be used.
Graphics	No usual graphic can be inserted during replays. FIS aim to use Virtual reality in the Alpine world cup programs, future developments of VR used during replays will be discussed with HBs.
Speed	Speed may varied in a replay to better show the scene. Not to use systematically.



2.2.4 SPECIAL CAMERAS

CRANES



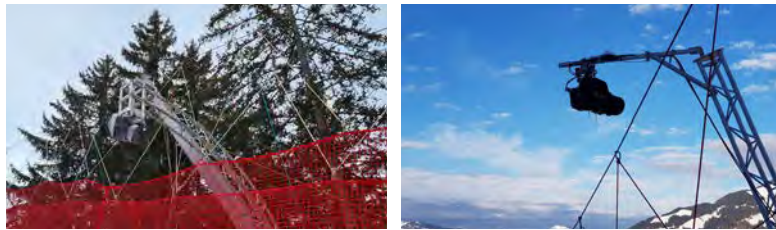
- Cranes camera requires larger platform, or on snow or on scaffolding.
- Cranes cameras along the course are operated by 2 operators.
- While the camera optics are above the racetrack, the crane is equipped with a security to avoid that the arm falls down on snow and becomes an obstacle for the skier in motion.
- Safety restrictions might be dictated by the jury (vicinity and shadow of the camera).

MINICAM



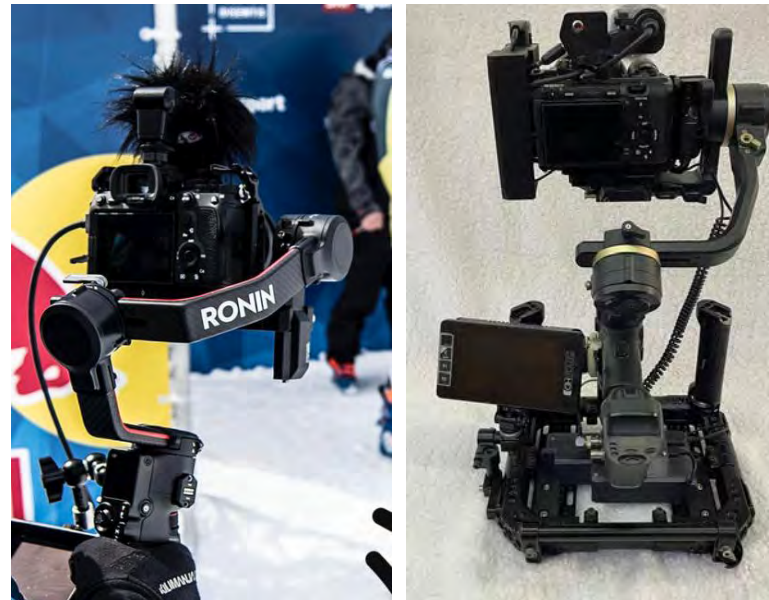
- Minicams are allowed to be placed on snow under special advice from Race Directors to comply with safety concepts in place.
- In SL the minicams can be above the snow surface.
- In other events the minicams are above the snow surface but protected with a snow mound.
- In all cases, the project and the nature of the camera as to be introduced to FIS prior to the camera installations.

REMOTE SYSTEM



- Remote camera system offers alternatives when constructions over permanent safety installations is simply impossible.
- Installation on Safety system towers must be approved by the LOC. This includes the mounting and cabling.
- An operator should always be available, especially after an impact on the fences.

GIMBALS



- Camera on gimbal is upmost in the finish area.
- Camera on gimbal in the warm-up zone give additional perspectives.
- Gimbals are per definition wireless.

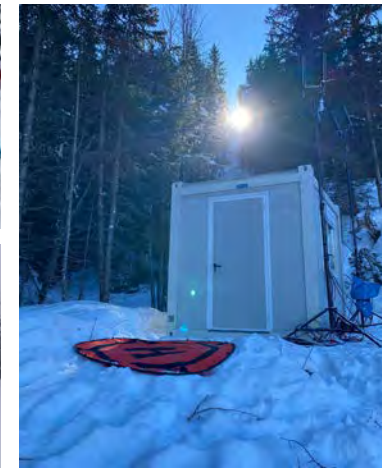
SUPER/HYPER SLOW-MOTION

- Such extreme slow-motion recordings allow for the visualization of fast events or move (body, face, legs, boots and skis, gate passage).
- High speed camera from 480 to 960 fps
- 1 Super slow-motion camera is upmost to complete the broadcast. On classical events for which intervals might be extended more of these cameras allow to cover a bigger part of the course. 1 Hyper slow-motion camera is part of the standard for major competitions.

CABLE CAM / CAMCAT

- Cable camera can be used, the construction must comply with local and national statics regulations
- Cable cam offer an alternative to aerial drone shot were flying over persons and race course is not possible: start facade, finish area, ceremonies.

DRONES



- Refers to the UAV specifications and Drone Policy attached.
- The use of the drone must fit with the hill topography (ref. drone policy).

2.3 RECORDINGS

LIST OF OBLIGATIONS IN THE MULTILATERAL RUNNING ORDER		
2.3.1 Recorded start	<ul style="list-style-type: none"> — In case the start interval becomes shorter than the running time, or the interval is too short to deliver the proper stories between the top skiers, or the TV Director need to extend the Live scene in the finish area before to go back to the start for the next competitor, the TV production must record instantly the start to save the time lost and replay the scene before to come back to the Live. 	<ul style="list-style-type: none"> — In DH, in case a portion of the course must be cut to fit with the intervals with a majority of the top 30 competitors, the portion is not necessarily the one from start below. In this circumstance the TV production need a start signal/feed running in parallel. This set up must be discussed during summer survey. — At the World ski championships, a Start feed is mandatory for the speed events. — In case of start feed, the set up must be announced during the summer survey as it requires a specific set up for TV graphics.
2.3.2 Interviews	<ul style="list-style-type: none"> — The number of interviews and who is interviewed is decided by FIS in cooperation with the TV directors and NSAs. — The interviews are coordinating and moderating by default by the FIS media coordinator. — The Multilateral post inspection interviews are done at the leader board position. Post inspection Athletes' interviews are recorded and displayed in the playouts. 	<ul style="list-style-type: none"> — Winner's interview is part of the closing sequence. The winner interview is moderated by the FIS media coordinator. In the case of a pre-World Cup finals Cup winner, it is added as an interview to that of the winner. In the case of finals, only the Discipline Cup winner is interviewed. — On demand, the FIS Media coordinator can request camera and audio for a special interview of the top athlete or the podium. This will be coordinated during the TV production meeting. — Interviews with participations of VIP guests may be done under FIS coordination.
2.3.3 Top10 competitors	<ul style="list-style-type: none"> — If the Top10 competitors' presentation clip, to deliver according the Multilateral running order, is not compiled from the TV graphics command, the clip must be done with the record of 5 seconds shot of the Top10 competitors of the day presenting their respective competition bibs in front of a FIS neutral backdrop. In this case, the transitions from 2022–2023 season are to be used. 	
2.3.4 Highlights	<ul style="list-style-type: none"> — The HB needs to compose a clip of 1 minute of the competition highlights, to be insert in the closing ceremony. 	<ul style="list-style-type: none"> — In case of drone footages for the Live coverage, a compilation of drone shots should be available in the closing sequence.

Table continues on the following page.

Continuation of the table from the previous page.

LIST OF OBLIGATIONS TO STICK TO THE MULTILATERAL RUNNING ORDER		
2.3.5 Winner's run	<ul style="list-style-type: none"> — As per the running order, the HB must deliver a "clean" full run of the winner, from top to bottom, regardless the start interval was not allowing a full run coverage at this time of the competition. 	
2.3.6 TOP 3	<ul style="list-style-type: none"> — At each TV break the HB must display 1 slow-motion for each of the current top3 competitors. The sequence with graphic inserts starts with the 3rd position, the second and the current leader. 	<ul style="list-style-type: none"> — At the end of the competition the HB must compile a 30 second clip of the top 3 slow motions.
2.3.7 Program	<ul style="list-style-type: none"> — The HB shall supply a full recording of the competition for the team, the LOC and FIS. — An access to the full record of the runs is given to the teams after the competition. 	<ul style="list-style-type: none"> — This is valid for the Official downhill trainings covered fully or even partially from the host broadcaster.
2.3.8 Video control	<ul style="list-style-type: none"> — Video control set up is based on the main feed. 1 EVS machine and 2 monitors, 1 for the replay, 1 for the Live. — On request, the jury will need, after the run is completed, access to different records from EVS machines to check different angles and camera perspectives. 	<ul style="list-style-type: none"> — In some cases, an independent system can be installed by the LOC/ FIS with a switch accepting more than 1 source. The set up should be announced and agree up on summer survey.
2.3.9 Falls	<ul style="list-style-type: none"> — On request from FIS, a selection of falls and all crashes must be taken from EVS machines, upload on a stick, and given to the present FIS representative after the competition. 	

2.4 AUDIO

The HB must produce a high-quality stereo television sound mix, an audio line up signals as described in the general part. Here are the specifications for Alpine competitions:

AUDIO	
2.4.1 On course audio	<ul style="list-style-type: none"> — The audio supervisor must prepare microphones suited to outdoor and harsh climate conditions with suitable protection from rain, snow and wind. — The accompanying sound must be synchronous to the picture. — It includes the ambience of the crowd reaction at the finish line. — It includes the start tent. — It includes the leader board.
2.4.2 Start and leader board	<ul style="list-style-type: none"> — Audio source coming from start gate and/or leader board should be permanently available for broadcast use in the international signal as it requires control and "near-Live" facilities. — Any special projects to use those signals for external diffusion must be coordinated with FIS and the rights holder.
2.4.3 Jury radio channel	<ul style="list-style-type: none"> — Jury channel can be used to illustrate some race facts. — In coordination with FIS and the rights holder, an audio digital interface is set up to deliver the jury radio channel discussions in real time in the TV unit as it requires control and "near-Live" facilities with eventual captions before the insert in the international signal.
2.4.4 Additional feeds	<ul style="list-style-type: none"> On demand from FIS, Rights holder, — An audio digital interface is set up to deliver signals in real time from a selection of microphones/signals. Examples: coach corner, team radio channels, on board microphones. — Delivery on site or via IP based solution to be defined.

2.5 TV HOST-BROADCAST TEAM

The host broadcaster is distributing among its team the following standardized roles.

- TV production manager
- Production assistant
- TV director
- TV director assistant
- Technical Director
- Graphic operator
- EVS operators
- Vision engineer
- Audio engineer
- First camera operator

The above job titles might be used in the correspondence between FIS, HB, Rights holder and LOC.

The operators of the HB having to move on the race hill must have the capacity to ski on hard and icy surfaces, the use of snowboards might not be allowed in the presence of any officials and athletes.



2.6 TV INFRASTRUCTURES & LOGISTICS

2.6.1 TV TOWERS

TV TOWERS		
Nature	<ul style="list-style-type: none"> — The towers are built to accommodate the different cameras all along the course. — The towers are the responsibility of the LOC, they have to be built according the local and national regulations. — In case the working regulations, applied to the host broadcaster hiring the operators, differ from the local ones especially in term of safety, the LOC will assist the HB to upgrade the construction at the appropriate level of safety and working conditions. 	<ul style="list-style-type: none"> — Towers over permanent safety system might not be possible in some location due to transport or ground surface challenge. Alternatives with other location or remote camera installed on the safety system must be proposed and confirm before the other constructions.
Services	<ul style="list-style-type: none"> — TV tower locations and dimensions must be first decided during the summer survey. — The hight of towers can be subject to adjustments regarding snow quantity and course profile. These adjustments should be announced latest at the snow control day. 	<ul style="list-style-type: none"> — Height of the towers are always measured effectively from snow level on mountain side. — Exceptionally a tower can be moved or hight adjusted right after course set in consideration to best view, stand out safety system. — Adjustments are foreseen from 1 event to the next (ex. SG to GS; GS to SL)
Safety	<ul style="list-style-type: none"> — The TV tower locations and dimensions announced during the summer survey allow the Race director to valid the basic location and together with the local Chief of race/slope confirm the appropriate safety. 	<ul style="list-style-type: none"> — The handheld cameras along the course are protected with high-speed protection air pads. To avoid the camera operator standing out of the fence protection because this one is too high, the HB use a small stair in soft material. The safety installation is the responsibility of the chief of slope and his equipment supplier, any change done by the operator will move the responsibility.
Cover	<ul style="list-style-type: none"> — While the tower is in the frame of another camera or photos, the construction should be covered, in neutral way or with the HB signs. (see Adv Rules art 2.8) 	



covered deck over permanent safety system





scaffolding fitting with permanent A fences



ideal set up for handheld

2.6.2 TRANSPORT AND CIRCULATION

SAFETY FIRST!		
Transport on racecourse	<ul style="list-style-type: none"> — As transport on the hill might compromise the racetrack surface with the circulation of snow machines, a planning of construction and transport of equipment must be shared with the chief of race. — Without any access from outside the fences, transport by helicopter is upmost. 	<ul style="list-style-type: none"> — Transport of light material inside the fences can be foreseen exclusively with fully acknowledgement of the HB team about the snow surface and with the authorisation of the chief of slope and FIS race directors.
Circulation	<ul style="list-style-type: none"> — All HB staff must proceed to the event accreditation request. The HB should proceed with the LOC with a complete list of persons for whom will be granted accreditation. — Access to the race hill is granted by FIS to the HB. HB will communicate the list of persons to the accreditation department. 	<ul style="list-style-type: none"> — All HB staff entering the racecourse must wear a visible bib. They have to acknowledge about the race hill surface, sometimes icy, and times schedule for the free circulation on the race hill. — Restrictions of circulation can be given at any time by the jury or the LOC to the HB (weather episode, snow machine program, avalanche risk, course preparation).

2.6.3 LIGHTING

In respect of any Competitions where it has been agreed that they shall take place outside the hours of normal daylight, professional lighting shall be provided by the LOC.

- A minimum of 1200–1400 Lux sufficient for High-Definition TV production and evenly spread shall be provided in all areas where competitions take place, including but not limited to all relevant TV areas inside the competition area, the mixed zone, at the start/finish area and on the course. Lighting in the spectator stands is also required for safe access and for optimal viewing. The LOC will provide the necessary documentation to the HB, and will take any measures, such as tests, deemed necessary by the HB to verify that the lighting system is appropriate and fulfils the required criteria.
- An existing floodlight system can fit to the standard. It must be under annual evaluation from the HB and LOC.

2.6.4 CABLING

The HB is responsible for all cabling installations to all host broadcast positions and areas (refers to above broadcast areas and to art. 3.3 from the general part of the Broadcast manual). Furthermore, all unilateral requests should be treated and coordinated by the HB.

Regarding safety obligations, the cables paths along the racecourse must be out of any safety zones communicated by the jury of competition. Timeframe and plan of cabling should be shared with the local chief of slope and at disposal of FIS for best coordination possible.

In Downhill, for safety reason, the referee position must be equipped with a monitor and multilateral feed.



The background of the slide is a photograph of a skier, likely a professional, smiling and wearing a dark blue jacket with several sponsor logos. The skier is wearing a cap with '5G' on it. The image is overlaid with a blue and yellow geometric pattern. The text '3. OPERATION & SCHEDULE' is written in white, bold, sans-serif font at the bottom of the image.

3. OPERATION & SCHEDULE

3.1 DEFINITION OF ROLES AND CONTRIBUTORS

As detailed in the general part of the Broadcast manual 1.2 and 1.3

3.2 SURVEYS

3.2.1 SUMMER SURVEY

SUMMER SURVEY	
Coordination	<ul style="list-style-type: none"> — A summer survey is scheduled by the FIS chief Race Director. — Dates are confirmed after the FIS calendar conference. — An agenda of the meeting must be shared at least 1 week before the survey. — The list of HB representatives present must be confirmed to FIS together with the survey's date. — During the survey a course inspection and a coordination meeting are foreseen. — Before start the survey a flashback on previous edition with the vision of several runs is upmost.
On course	<ul style="list-style-type: none"> — A course inspection is necessary for new courses, updates on camera plan, new projects. — The list of persons to be present is sent with the invitation. — In case HB needs additional surveys, before or after the official one in presence of the Chief Race Director, a report has to be addressed in due time to all parties involved.
Finish area	<ul style="list-style-type: none"> — A coordination meeting with the TV right holder's manager and the LOC is held. — The discussions must cover the topics about the mixed zone, unilateral broadcasters' infrastructures, and services.
Documentation	<ul style="list-style-type: none"> — Prior to the survey the LOC shares with the list of present, the updated course map, the ground layout map of finish area. — The HB shares the provisional or existing camera plan. — A series of aerial shots with course set, safety system and camera position are upmost for discussions and debriefing. This is valid for start, course, finish area and TV compound. — The HB comes with video tapes of last edition or example of other broadcasts.

3.2.2 ON SNOW SURVEY

ON SNOW SURVEY	
Coordination	<ul style="list-style-type: none"> — “On snow” survey can be more suitable to camera plan adjustments and can fit better to the constructions calendar. — A survey on snow can be scheduled before summer survey or after during the winter season. The survey in this case is conducted by the HB together with appointed FIS TV coordinator, the presence or not of a FIS race Director must be coordinated. — An agenda of the meeting must be shared at least 1 week before the survey. — A report of the survey must be addressed to all parties and the Chief Race Director.

3.2.3 SNOW CONTROL DAY & BACK UP

SNOW CONTROL DAY & BACK UP	
Snow control	<ul style="list-style-type: none"> — The snow control day is scheduled 10 days prior to the official arrival day for Downhill, Super G and Team combined, 7 days before official arrival day for other technical events. The calendar of the Alpine Snow controls is published on the FIS web site and communicated to all organizers. — On the snow control day will be confirmed or not if the event can be held as scheduled or with some adjustments.
Adjustments	<ul style="list-style-type: none"> — In connection with the snow control day: a decision on course, start location or program adjustment can be collectively taken (National ski association, Rights holder, HB, LOC, FIS). The HB can be consulted for such adjustments of course/racetrack, start options, event and program. — Back up within the event period.
Back up	<ul style="list-style-type: none"> — In case a race or one event is cancelled, and a new program is foreseen, the FIS Chief Race Director together with the LOC, the National ski association, the Rights holder, FIS Media & Marketing representatives shall meet to establish the new event schedule. Agreement should be reached with rights holder with live programming commitments in order to identify any external factors.

3.3 REHEARSALS

3.3.1 TEST EVENT

- **New track:** when a World cup downhill is planned for the first time on a hill, a survey on snow with expected course set is mandatory. The various ski tests will be watched by the TV director or/ and assistant.
- **World Ski Championships:** For the World Ski Championships, a World Cup class event must be held before.
- For test events, a list of points to be tested have to be shared between FIS, the HBs and the LOC.

3.3.2 DOWNHILL TRAINING

- Last official training before competition: the HB must have, from start to finish, a Live coverage for eventual broadcast or for a rehearse in real conditions.
- World Ski Championships: all official downhill trainings are broadcasted. The quality of the broadcast is discussed between the HB, FIS and the Rights holder.
- World cup official training broadcast: in case an official Downhill training is diffused Live, the intervals might be discussed and adjusted accordingly.

3.3.3 OTHER REHEARSES

- GS/SL: In technical events, the broadcast on course must be rehearsed with the course set.
- 5 forerunners shall ski the gate in the complete course, with the competition intervals, to enable the HB to conduct a full rehearsal. (To be approved or adjusted by the Jury of competition in regard to course conditions)
- TV Graphics: the complete running order graphics must be tested the day before the competition.
- Awards Ceremony Rehearsal: D-1 or at the end of one of the Downhill trainings. An official prize-giving rehearsal coordinated by FIS with the participation of HB and LOC is carried out.



3.4 DAILY PROGRAMS

	DAY & TIME	FROM HB TEAM
Course set	D-1 or Day of competition before the jury inspection.	TV director/assistant/First camera assistant
Course set run2	right after last competitor run1	--
Jury inspection	Day before 1st training, Training and competition days: 60 to 90 minutes before racer's inspection.	TV director/TV production manager
Racer's inspection	Starting time -1 to 3 hours	TV operators are in position to capture the right scenes
Interviews	During and right after the racer's inspection	Operator at leader board + Audio Recording operator.
Course Clean up	Starting time -30 to 60 minutes	TV director/First camera assistant in contact with the advertising team on course for some bannering adjustments TV director/First camera assistant in contact with the chief of slope for some eventual safety adjustments
Play out + / Preshow	On air starting time -30 minutes	Complete team
Opening sequence	starting time -10 minutes	Complete team
Competition	--	Complete team
Course set: if run 2	right after last competitor run1	TV director/assistant/First camera assistant
Closing sequence	Start with winner's presentation ("Toblerone")	Partial team
Course set: if event next day	To be announced by the jury	TV director/assistant/First camera assistant
Team captain meeting	According to the official Event program	TV director/TV production manager
Production meeting	First ceremony -1 day	TV production manager/TV right holder's manager

3.5 PROCEDURE & COMMUNICATION

3.5.1 STARTING TIME PRECISIONS

- The FIS season starting times planning is established after the release of the FIS World Cup calendars under the control of FIS and in agreement with the rights holder and HB. The fixed times are binding for organizers and must be observed in all cases.
- The published starting time on the FIS starting time list is the time when the athlete with the bib number 1 will start.
- Short term advancements of the starting time are not permitted except when agreed upon with the global TV rights holder. It is understood that the start time may be delayed due to poor weather conditions.

3.5.2 CHANGE OF PROGRAM

CASES	SPECIFICATIONS
Before official arrival day	<ul style="list-style-type: none"> — Refers to SNOW CONTROL & BACK UP paragraph up above.
After training or in case a race is cancelled per anticipation	<ul style="list-style-type: none"> — Depending on the actual situation there should be a meeting between the FIS Chief Race Director, Jury and the TV Producer immediately following the final training run, the last race or at least one hour before the start of the television transmission to discuss those points that will influence any decisions. — In case a race is cancelled, or the weather forecast predicts the likelihood of a cancellation, and a new program is foreseen, the FIS Chief Race Director together with the LOC, the National ski association, the Rights holder, FIS Media & Marketing representatives shall meet to establish the new event schedule. Agreement should be reached with rights holder with live programming commitments in order to identify any external factors.
During competition	<ul style="list-style-type: none"> — In case of bad weather, a new suitable filler program can be established quickly in consultation with all parties concerned. The TV Coordinator will inform RHB's about the HB production and any amendments to the 'running order'. The HB is responsible for distributing the information to all RHB's. — This applies for delayed start. The published start time and new program will be then available at least 30 minutes before the original start time. — This applies for start intervals or TV break changes.
Cancellation	<p>In case of cancellation:</p> <ul style="list-style-type: none"> — Show the facts: fog, wind, snow; before and after the decision. — Right after jury discussion, show Race Directors + titles and display "audio" if recorded and controlled and replayed. Use the free-text catalogue and insert the right graphic. — Record some longer scene of facts to air in the closing sequence. — Record the interview of the Chief Race Director and insert it in the closing sequence.

3.5.3 INTERRUPTIONS

CASES	DESCRIPTION	ACTION LIST
Course repair and Gate repair	in case the race is interrupted for technical reasons and subject to restart in short time	<ul style="list-style-type: none"> — Insert the top screen graphics “race interrupted” if the jury has not confirmed the “course clear” and restart during the run of current athlete or during his/her reaction and slow-motion. — Short interruption gives opportunities to show the actual leader, to display some athlete’s biography on the warm up, or crowd cheering. — Short factual insert of the incident is enough. Do not show the entire repair scene.
Weather event	an interruption due to weather event will contain the following:	<ul style="list-style-type: none"> — Insert the top screen graphics “race interrupted due to xxxx” — Show the facts: fog, wind, snow. — In case of longer interruption ask the map locator GFX with the sector’s indication — In case of longer interruption take the opportunity to show the actual leader, to display some athlete’s biography on the warm-up, or crowd cheering — In case jury discussion, show Race Directors + titles and display “audio” if recorded and con-trolled and replayed. <p>With or without audio, use the free text catalogue to feed the audience with decisions and terms.</p>

Table continues on the following page.

Continuation of the table from the previous page.

CASES	DESCRIPTION	ACTION LIST
Falls	NOT SERIOUS	<ul style="list-style-type: none"> — At the discretion of the director to show the replay depending on how dramatic the images look. — Number of Replays should tell a story, not a repetition of scene that affect the skier's physical integrity. — Show the skier getting up. — Show the skier moving away. — Show the team relief. — Show the skier waving the crowd/officials.
	SERIOUS	<ul style="list-style-type: none"> — Do not show. — Do not show the skier lying on the snow replay. — Do not show distressed skier. — Cut to the crowd shot. — Show the arena. — Show medics arriving. — Show EVS Highlights of competition so far while waiting for the arena to be cleared. — Use the free text catalogue to feed the audience with decisions and terms. <p>Slow motion of the mistake can be used and cut before the skier's physical integrity is compromised.</p>
In Field intruder / protestor		<ul style="list-style-type: none"> — Do not show anything in vision, do not cut to them during the live. — Do not show any replays. — Show "close up" of the competitors stopping. — Show crowds clapping once the arena has been clear. — Show EVS Highlights of competition so far if there is a continuous problem. — The HB must record the scene from different angles for the officials.

3.5.4 COMPETITION RADIO COMMUNICATION

RADIOS

- The HB TV Director and the TV right holders manager will remain in permanent radio contact with the FIS Chief Race Director during the race to help co-ordinate with TV production crew any special or unforeseen incidents on or around the course. The contact is established directly via the Jury channel.
- The HB TV producer should have a permanent contact with the Chief of slope for any special request to be dealt on course during the competition (ex. safety system).
- The radios are supplied by the LOC.



3.6 ADVERTISING ALPINE SPECIFICATIONS

3.6.1 ADVERTISING ON COURSE

MATERIALS

- Material on course must comply with the current FIS advertising Rules, in terms of quality and quantity.
- Banners shall be fixed on PVC frames with breakable point
- The material used must be at the right dimension and the right quality. Advertising rules art. 3.1.2.
Their measurements must not exceed:
Downhill/Super G/Giant Slalom/Parallel: eight (8) metres in length and one and a half (1,5) metres in height
Slalom: six (6) metres in width and one metre in height

INSTALLATION

- The chief of advertising handling team must be identified by the HB and especially the TV director and his first camera assistant.
- According Rules, no banners or advertising can be installed on temporary fences (B or B/C or C)
- Advertising on the A fences or printed slip skirt are allowed.
- The Race director accompanied with the Director of Race operation are controlling the position from safety perspectives.
- The use of race drones to cover 1 or more sections must be announced and confirmed latest by the summer survey in order to give time for the National ski Association and its marketing agency to adjust the bannering program on course accordingly.

SCHEDULE

- During the course set the chief of handling team must acknowledge the cut away plan and mark all the banners position accordingly.
- A first control together with the TV director in the OB van the day before the competition is utmost.
- Adjustments have to be done before the competition starts.

3.6.2 START

Advertising of start refer to the current FIS Advertising rules and Alpine Marketing Guideline for the season 2023-2024.

In case of night event, the façade and advertising banners must receive the correct light.

In case of LED wall, the script of animation must be share with FIS and HB for best coordination possible. The LED wall might be used also for “competition” purpose other than athlete’s data. The HB and FIS need to coordinate those different outputs.



start led wall

3.6.3 VIRTUAL ADVERTISING

Virtual advertising is in principle not allowed at any FIS World Cup events. Exceptions can be made but need the approval of FIS and the respective National Ski Association (FIS Advertising Rules Art 1.10)

The background of the slide is a photograph of a female athlete celebrating. She is wearing a dark cap and a jacket, and she has her mouth open in a shout. She is holding a large flag aloft with her right arm. The image is overlaid with a blue gradient that is darker at the bottom. The text '4. MULTILATERAL RUNNING ORDER' is written in white, bold, sans-serif font across the bottom of the image.

4. MULTILATERAL RUNNING ORDER

The HB must use the official FIS opening and closing sequences running order sequences.

Here below an example of running order for Giant Slalom, 1st run + 2nd run, and for speed events. (given as example and subject to modifications)

4.1 EXAMPLE OF DOWNHILL (SPEED EVENTS)

DOWNHILL – Pre-Show & Opening

	In	Take	In	Out	Description	Source	Duration	Time	
	(GMT)		(local time)				(mm.ss)		
PRE-SHOW	08:30:00		09:30:00	09:49:00	ATHLETES INTERVIEWS AFTER INSPECTION ATHLETES INSPECTION STARTLIST (full page – all racers) WC DISCIPLINE/OVERALL STANDINGS GFX WEATHER VENUE CLIP BEAUTY SHOTS (4min)	GFX GFX	19:00	– 00:30:00	
OPENING	08:49:00	1	09:49:00	09:50:00	60" Countdown (last 3" BLACK)	EVS	01:00	– 00:11:00	
		2	09:50:00	09:50:10	INFRONT CAPTION	EVS	00:10	– 00:10:00	
		3	09:50:10	09:50:35	FIS/INFRONT OPENING Animation	EVS	00:25	– 00:09:50	
		4	09:50:35	09:51:05	VENUE PRESENTATION	EVS	00:30	– 00:09:25	
		5	09:51:05	09:51:15	BUMPER VENUE/RACE LOCATOR	EVS	00:10	– 00:08:55	
		6	09:51:15	09:51:30	Wide shot + GFX TITLE EVENT	Live + Graphics	00:15	– 00:08:45	
		7	09:51:30	09:51:45	Atmosphere at the venue	Live	00:15	– 00:08:30	
		8	09:51:45	09:51:55	Wide Shot at the start area	Live	00:10	– 00:08:15	
		9	09:51:55	09:52:10	Athlete preparation 1	Live/EVS + Graphics	00:15	– 00:08:05	
		10	09:52:10	09:52:25	Athlete preparation 2	Live/EVS + Graphics	00:15	– 00:07:50	
		11	09:52:25	09:52:40	Athlete preparation 3	Live/EVS + Graphics	00:15	– 00:07:35	
		12	09:52:40	09:52:55	Athlete preparation 4	Live/EVS + Graphics	00:15	– 00:07:20	
		13	09:52:55	09:53:10	Athlete preparation 5	Live/EVS + Graphics	00:15	– 00:07:05	
		14	09:53:10	09:53:25	Beauty Shot + GFX last DH Winners in	Live + Graphics	00:15	– 00:06:50	
		15	09:53:25	09:53:40	Beauty shot + GFX Road to the Globe new GFX	Live + Graphics	00:15	– 00:06:35	
		16	09:53:40	09:53:50	Venue wide shot	Live	00:10	– 00:06:20	
		17	09:53:50	09:53:55	FIS/INFRONT OPENING BUMPER	EVS	00:05	– 00:06:10	
		18	09:53:55	09:54:05	Beauty shot + GFX TITLE EVENT	Live + Graphics	00:10	– 00:06:05	
		19	09:54:05	09:54:35	GFX weather conditions + course technical data	Live + Graphics	00:30	– 00:05:55	
		20	09:54:35	09:54:45	BUMPER VENUE/RACE LOCATOR	EVS	00:10	– 00:05:25	
		21	09:54:45	09:56:45	POV Camera Run	EVS + Graphics	02:00	– 00:05:15	
		22							
		23	09:56:45	09:57:00	Warm up area + GFX starting list 1–5 (mini startlist)	Live/EVS + Graphics	00:15	– 00:03:15	
		24	09:57:00	09:57:45	TOP ATHLETES PRESENTATION #6–#15	EVS + Graphics	00:45	– 00:03:00	
		25	09:57:45	09:58:30	Warm up Area	Live	00:45	– 00:02:15	
		26	09:58:30	09:58:45	"Beauty shot + GFX TV director / + GFX TV production /		00:15	– 00:01:30	
		27	09:58:45	10:00:00	Wide shot start + warm up +1st racer on start+ countdown clock	Live + Graphics	01:15	– 00:01:15	

DOWNHILL – Race

	In	Take	In	Out	Description	Source	Duration	Time
	(GMT)		(local time)					
RACE	09:00:00	28	10:00:00	10:35:00	Racer bib nr. 1–5: start interval: 2'10" 6–15: start interval: 2'40" GFX "Next at start" bar / after #5 has started GFX "standings" bar / after #10 has started GFX "next at start" / after #14 has started GFX "standings" / after #15 has started. GFX "standings" while previous athlete enter into TOP 5 BUMPER "CUP LEADER" when leader is at the start	Live + Graphics	35:00	
		29	10:35:00	10:37:15	Break after bib nr. 15 Leader close up at the leader board + GFX current leader + standings + slowmotions (3-2-1) + next racer in the start house + GFX mini Start list #16 to #22 + countdown clock"	Live + EVS + Graphics	02:15	
		30	10:37:15	10:51:15	Racer bib nr. 16–22: start interval: 2' GFX "standings" bar / after #16 has started GFX "next at start" / after #21 has started GFX "standings" / after #22 has started. GFX "standings" while previous athlete enter into Top5	Live + Graphics	14:00	
		31	10:51:15	10:53:30	Break after bib nr. 22 + standings + slowmotions (3-2-1) + next racer in the start house + GFX mini Start list #23 to #31 + countdown clock	Live + EVS + Graphics	02:15	
		32	10:53:30	11:09:30	Racer bib nr. 23–30: start interval: 2' GFX "standings" bar / after #23 has started GFX "next at start" / after #29 has started GFX "standings" / after #31 has started. GFX "standings" while previous athlete enter into TOP 5	Live + Graphics	16:00	
		33	11:09:30	11:11:45	Break after bib nr. 30 + standings + slowmotions (3-2-1) + starting list #31–#49 (mini startlist) + countdown clock	Live + EVS + Graphics	02:15	
		34	11:11:45	11:39:15	Racer bib nr. 31–44 start interval: 1'15" 45-49 start interval: 2'00" GFX "standings" while previous athlete enter into Top10	Live + Graphics	27:30	

DOWNHILL – Closing

	In	Take	In	Out	Description	Source	Duration	Time
	(GMT)		(local time)				(mm.ss)	
CLOSING		35	11:39:15	11:40:15	Beauty shot + results (GFX BUMPER PODIUM + RESULTS)	Live + Graphics	01:00	
		36	11:40:15	11:40:45	Best slowmotions of the top three racers ranked (3-2-1)	EVS + Graphics	00:30	
		37	11:40:45	11:41:45	Winner's interview (in English)	Live+ sound via IS	01:00	
		38	11:41:45	11:42:15	Slowmotions of the Winners (Emotions)	EVS	00:30	
		39	11:42:15	11:42:45	GFX WORLD CUP STANDINGS (DISCIPLINE/OVERALL/NATIONS CUP)	Live + Graphics	00:30	
		40	11:42:45	11:45:00	Winner's run (clean feed)	EVS	02:15	
		41	11:45:00	11:49:15	Beauty shots (+ further slowmotions)	Live	04:15	
		42	11:49:15	11:54:15	Award ceremony (actual start time: 10 minutes after last racer's crossing finish line)	Live	05:00	
		43	11:54:15	11:54:45	Beauty shot + GFX TV director + GFX TV production	Live + Graphics	00:30	
		44	11:54:45	11:55:45	Emotional Clip (with music)	EVS	01:00	
		45	11:55:45	11:56:00	Beauty shot + GFX next race	EVS	00:15	
		46	11:54:45	11:55:10	FIS Animation	EVS	00:25	
		47	11:55:45	11:55:55	Caption	EVS	00:10	

4.2 EXAMPLE OF GIANT SLALOM (TECH. EVENTS)

GIANT SLALOM 1st RUN – Pre-Show & Opening

	In	Take	In	Out	Description	Source	Duration	Time
	(GMT)		(local time)					
PRE-SHOW	08:00:00		09:00:00	09:19:00	ATHLETES INTERVIEWS AFTER INSPECTION ATHLETES INSPECTION GFX STARTLIST (full page – all racers) GFX WC DISCIPLINE/OVERALL STANDINGS GFX WEATHER VENUE CLIP BEAUTY SHOTS (4min)		19:00	– 00:29:30
OPENING	08:19:00	1	09:19:00	09:20:00	60" Countdown (last 3" BLACK)	EVS	01:00	– 00:10:30
		2	09:20:00	09:20:10	CAPTION	EVS	00:10	– 00:09:30
		3	09:20:10	09:20:35	FIS OPENING Animation	EVS	00:25	– 00:09:20
		4	09:20:35	09:21:05	VENUE PRESENTATION	EVS	00:30	– 00:08:55
		5	09:21:05	09:21:15	BUMPER VENUE/RACE LOCATOR	EVS	00:10	– 00:08:25
		6	09:21:15	09:21:30	Beauty shot + GFX TITLE EVENT	Live + Graphics	00:15	– 00:08:15
		7	09:21:30	09:21:45	Atmosphere at the venue	Live + Graphics	00:15	– 00:08:00
		8	09:21:45	09:21:55	WIDE SHOT at the start area	Live	00:10	– 00:07:45
		9	09:21:55	09:22:10	Athlete preparation 1	Live + Graphics	00:15	– 00:07:35
		10	09:22:10	09:22:25	Athlete preparation 2	EVS + Graphics	00:15	– 00:07:20
		11	09:22:25	09:22:40	Athlete preparation 3	EVS + Graphics	00:15	– 00:07:05
		12	09:22:40	09:22:55	Athlete preparation 4	EVS + Graphics	00:15	– 00:06:50
		13	09:22:55	09:23:10	Athlete preparation 4	EVS + Graphics	00:15	– 00:06:35
		14	09:23:10	09:23:25	Beauty Shot + last GS winners in	Live + Graphics	00:15	– 00:06:20
		15	09:23:25	09:23:40	Beauty shot + GFX Road to the Globe NEW GFX	EVS + Graphics	00:15	– 00:06:05
		16	09:23:40	09:23:50	venue wide shot	Live + Graphics	00:10	– 00:05:50
		17	09:23:50	09:23:55	FIS / INFRONT OPENING BUMPER	EVS	00:05	– 00:05:40
		18	09:23:55	09:24:05	Beauty wide shot + GFX TITLE EVENT	Live + Graphics	00:10	– 00:05:35
		19	09:24:05	09:24:35	GFX weather conditions + course technical data	Live + Graphics	00:30	– 00:05:25
		20	09:24:35	09:24:45	BUMPER VENUE/RACE LOCATOR	EVS	00:10	– 00:04:55
		21	09:24:45	09:26:00	POV Run	EVS + Graphics	01:15	– 00:04:45
		22	09:26:00	09:26:45	Atmosphere at the venue	EVS/Live	00:45	– 00:03:30
		23	09:26:45	09:27:00	Athletes' preparation 5 (top favourite)	EVS/Live	00:15	– 00:02:45
		24	09:27:00	09:27:45	TOP ATHLETES PRESENTATION #1–#10	EVS + Graphics	00:45	– 00:02:30
		25	09:27:45	09:28:00	GFX Mini Startlist (1/3 page on screen's left. Only 5 competitors, ending at bib 15)	Live + Graphics	00:15	– 00:01:45
		26	09:28:00	09:28:15	Beauty shot + GFX TV director / + GFX TV production /		00:15	– 00:01:30
		27	09:28:15	09:29:30	Wide shot start + warm up +1st racer on start + countdown clock	Live + Graphics	01:15	– 00:01:15

GIANT SLALOM 1st RUN – Race & Closing

	In	Take	In	Out	Description	Source	Duration	Time
	(GMT)		(local time)					
RACE	08:29:30	28	09:29:30	09:55:45	Racer bib nr. 1–15 start interval: 1'45" GFX "Next at start" bar/ after #8 has started GFX "standings" bar / after #9 has started GFX "Next at start" bar/ after #14 has started GFX "standings" bar / after #15 has started BUMPER "CUP LEADER" when leader is at the start	Live + Graphics	26:15	
		29	09:55:45	09:58:00	Break after bib nr. 15 Leader close up at the leader board + GFX current leader + standings + slowmotions (3-2-1) + next racer in the start house + GFX mini Start list #16 to #22 + countdown clock"	Live + EVS + Graphics	02:15	
		30	09:58:00	10:08:30	Racer bib nr. 16–22 start interval: 1'30" GFX "standings" bar / at finish line / from #16+ GFX "standings" when previous bib is entering Top10	Live + Graphics	10:30	
		31	10:08:30	10:10:45	Break after bib nr. 22 + standings + slowmotions (3-2-1) + next racer in the start house + GFX mini Start list #23 to #30 + countdown clock	Live + EVS + Graphics	02:15	
		32	10:10:45	10:22:45	Racer bib nr. 23–30 start interval: 1'30" GFX "standings" when previous bib is entering Top10	Live + Graphics	12:00	
		33	10:22:45	10:25:00	Break after bib nr. 30 + standings + slowmotions (3-2-1) + starting list #31–#62 (mini startlist) + countdown clock	Live + EVS + Graphics	02:15	
		34	10:25:00	10:49:00	Racer bib nr. 31–62 / start interval: 45"	Live + Graphics	24:00	
	CLOSING	09:49:00	35	10:49:00	10:51:00	Beauty Shot + results 1st run	Live + Graphics	02:00
		36	10:51:00	10:51:30	Best slowmotions of the top three racers ranked (3-2-1)	EVS + Graphics	00:30	+ 00:02:00
		37	10:51:30	10:53:00	Leader's run (clean feed)	EVS	01:30	+ 00:02:30
		38	10:53:00	10:53:30	Beauty shot + GFX TV director / + GFX TV production /	Live + Graphics	00:30	+ 00:04:00
		39	10:53:30	10:54:30	Best shots of the 1st run + music	EVS	01:00	+ 00:04:30
		40	10:53:30	10:53:55	FIS ANIMATION	EVS	00:25	+ 00:04:30
		41	10:54:30	10:54:40	CAPTION	EVS	00:10	+ 00:05:30

GIANT SLALOM 2nd RUN – Pre-Show & Opening

	In	Take	In	Out	Description	Source	Duration		Time
	(GMT)		(local time)				(mm.ss)		
PRE-SHOW	11:00:00		12:00:00	12:19:00	ATHLETES INTERVIEWS AFTER INSPECTION ATHLETES INSPECTION GFX STARTLIST (full page – all racers) GFX WC DISCIPLINE/OVERALL STANDINGS GFX WEATHER VENUE CLIP BEAUTY SHOTS (4min)		19:00	–	00:30:00
OPENING	08:19:00	1	12:19:00	12:20:00	60" CTD (last 3" BLACK)	EVS	01:00	–	00:11:00
		2	12:20:00	12:20:10	CAPTION	EVS	00:10	–	00:10:00
		3	12:20:10	12:20:35	FIS ANIMATION	EVS	00:25	–	00:09:50
		4	12:20:35	12:21:05	VENUE PRESENTATION	EVS	00:30	–	00:09:25
		5	12:21:05	12:21:15	BUMPER VENUE/RACE LOCATOR	EVS	00:10	–	00:08:55
		6	12:21:15	12:21:25	Beauty shot + GFX TITLE EVENT	Live + Graphics	00:10	–	00:08:45
		7	12:21:25	12:21:40	Best slowmotions of the top three racers ranked (3-2-1; each racer 5 sec.)	EVS + Graphics	00:15	–	00:08:35
		8	12:21:40	12:23:00	Leader's 1st run (dirty)	EVS + Graphics	01:20	–	00:08:20
		9	12:23:00	12:23:30	Results 1st run (3 pages; each page 10 sec.)	EVS + Graphics	00:30	–	00:07:00
		10	12:23:30	12:23:40	Beauty shot + GFX Road to the Globe NEW GFX	Live+ Graphics	00:10	–	00:06:30
		11	12:23:40	12:23:50	Venue wide shot	Live + Graphics	00:10	–	00:06:20
		12	12:23:50	12:23:55	FIS / INFRONT BUMPER	EVS	00:05	–	00:06:10
		13	12:23:55	12:24:05	Beauty shot + GFX TITLE EVENT	Live + Graphics	00:10	–	00:06:05
		14	12:24:05	12:24:30	GFX weather conditions + technical data	Live + Graphics	00:25	–	00:05:55
		15	12:24:30	12:24:40	BUMPER VENUE/RACE LOCATOR	EVS	00:10	–	00:05:30
		16	12:24:40	12:25:55	POV Run	EVS + Graphics	01:15	–	00:05:20
		17	12:25:55	12:26:15	Atmosphere at the venue	Live	00:20	–	00:04:05
		18	12:26:15	12:26:30	Wide shot start area	EVS/Live	00:15	–	00:03:45
		19	12:26:30	12:26:45	Athlete preparation 1	EVS + (Graphics)	00:15	–	00:03:30
		20	12:26:45	12:27:00	Athlete preparation 2	EVS + (Graphics)	00:15	–	00:03:15
		21	12:27:00	12:28:00	GFX starting list (5 names per page/with photos)	Live + Graphics	01:00	–	00:03:00
		22	12:28:00	12:28:15	Wide shot + GFX last GS winners in	Live + Graphics	00:15	–	00:02:00
		23	12:28:15	12:28:30	Beauty shot + GFX TV director / + GFX TV production /	Live + Graphics	00:15	–	00:01:45
		24	12:28:30	12:30:00	Wide shot start + warm up + racer ranked 30th after 1st run + countdown clock	Live + Graphics	01:30	–	00:01:30

GIANT SLALOM 2nd RUN – Race

	In	Take	In	Out	Description	Source	Duration	Time
	(GMT)		(local time)					
RACE		25	12:30:00	12:52:30	Racer ranked 30-16 start interval: 1'30" GFX "standings" bar / after 19th has started GFX "Next at start" bar/ after 17th has started GFX "standings" bar / after 16th has started	Live + Graphics	22:30	
		26	12:52:30	12:54:45	Break after racer ranked 16th after 1st run Leader close up at the leader board + GFX current leader + standings + slowmotions (3-2-1) + atmosphere / warming up + GFX mini Start list 15th to 9th + next racer in the start house (15 sec. prior to start) + countdown clock	Live + EVS + Graphics	02:15	
		27	12:54:45	13:07:00	Racer ranked 15 - 9 start interval: 1'45" GFX "standings" bar / after 14th has started GFX "Next at start" bar / after 10th has started GFX "standings" bar / after 9th has started	Live + Graphics	12:15	
		28	13:07:00	13:09:15	Break after racer ranked 9th after 1st run Leaders close up at the leader board + GFX current leader + standings + slowmotions (3-2-1) + atmosphere / warming up + GFX mini Start list 8th to 1 + next racer in the start house (15 sec. prior to start) + countdown clock"	Live + EVS + Graphics	02:15	
		29	13:09:15	13:26:35	Racer ranked 8-1 / start interval: 2'10" GFX "standings" bar / after 7th start GFX "head to head" before last racer	Live + Graphics	17:20	

GIANT SLALOM 2nd RUN – Closing

	In	Take	In	Out	Description	Source	Duration		Time
	(GMT)		(local time)	(mm.ss)					
CLOSING	12:26:35	30	13:26:35	13:28:35	Audi triangle emotion shot (announcement: 3-2-1); athletes in the finish area	Live	02:00	+	00:00:00
		31	13:28:35	13:29:35	Beauty shot + BUMPER PODIUM + results	Live + Graphics	01:00	+	00:02:00
		32	13:29:35	13:30:05	Best slowmotions of the top three racers ranked (3-2-1)	EVS + Graphics	00:30	+	00:03:00
		33	13:30:05	13:31:35	Winner's interview (in English)	Live+ sound via IS	01:30	+	00:03:30
		34	13:31:35	13:33:05	Slowmotions of the Winners (Emotions)	EVS	01:30	+	00:05:00
		35	13:33:05	13:33:50	GFX WORLD CUP STANDINGS (DISCIPLINE/OVERALL/NATIONSCUP)	Live + Graphics	00:45	+	00:06:30
		36	13:33:50	13:35:20	Winner's run (clean feed)	EVS	01:30	+	00:07:15
		37	13:35:20	13:45:20	Beauty shots (+ further slowmotions)	Live	10:00	+	00:08:45
		38	13:45:20	13:50:20	Award ceremony - actual start time: 20 minutes after final racer crossing finish line	Live	05:00	+	00:18:45
		39	13:50:20	13:50:50	Beauty shot + GFX TV director / + GFX TV production /	Live + Graphics	00:30	+	00:23:45
		40	13:50:50	13:51:50	Emotional Clip (with music)	EVS	01:00	+	00:24:15
		41	13:51:50	13:52:05	Beauty shot + GFX next race	EVS	00:15	+	00:25:15
		42	13:50:50	13:51:15	FIS Animation	EVS	00:25	+	00:24:15
		43	13:51:50	13:52:00	Caption	EVS	00:10	+	00:25:15



5. GRAPHICS & DATA-TIMING

5.1 DATA & TIMING INSTALLATIONS

DATA & TIMING SERVICE PROVIDER

For the season 2023–2024, Swiss timing will be data & timing service provider.

Contact: Pierre Meyrat

E-mail: pierre.meyrat@swisstiming.com

Phone: +41 32 488 36 06

Mobile: +41 79 486 49 88

INSTALLATIONS

Timing hut

- Timing hut accommodates the OVR software, the international signal graphics generator, the data web interface, the scoreboard control.
- The timing hut is located on site but not necessarily closed to the TV compound, cabling being responsibility of the HB.

MIS

- 1 MIS terminal for the announcer
- MIS terminals for all commentators in the commentator booths
- 2 MIS for Host Broadcaster in TV Compound
- 1 MIS at equipment control (FIS Equipment tent) near to the exit gate
- 1 MIS in the restricted area reserved for coaches (finish area)
- (1 MIS at start for parallel events)

Intermediates and speed traps

- Pre-Cabling for Intermediate times & speed traps are installed for the snow control day.
- Cabling is completed the day before the competition/official training or during the course set for 2 runs event and 2 consecutive competitions.

Live timing

- On a selection of competitions, a Live electronic timing solution will be scheduled, all events are concerned (DH, SG, GS or SL)
- With this confirmation, a precise coordination must start between the TV Director/producer, Swiss timing and FIS to optimize the set up and write the most appropriated TV graphics scripts to the cutting plans.

Schedule

- Optic fibre between OB van and TV graphics generator must be installed at least 1h before the TV graphics rehearsal session.
- The Swiss timing Alpine Coordinator will communicate before the season starts the complete list of the on-site “points of contact” for the swiss timing team in operation in each different venue.
- The location of the intermediate speed and timing points have to be discussed during the summer survey.
- Live electronic time and data must be announced during the summer survey.

5.2 GRAPHICS SPECIFICATIONS

NATURE		
Timing & data	<ul style="list-style-type: none"> — Timing data, event data, competition data and competitors' data are collected and managed by the Swiss timing TV command and its operator. 	<ul style="list-style-type: none"> — 1 operator per competition. — The graphic generator is located in the timing room.
Transitions / Animations source	<p>All generic TV animations/transitions are delivered by FIS to HB via their respective rights holder, and must be used:</p>	<ul style="list-style-type: none"> — Transition/wipe "back to Live": used as transition between recorded scene to Live. — Transition/wipe in-out for slow-motion. — Bumpers to introduce the venue presentation sequence, the course presentation sequence, the podium and results, the standings.
Transitions / Animations uses	<p>All TV animation/transition, without any data or image, that are used to transitions are not generated by Swiss timing but must be ready to tape and used according to the official running order:</p> <ul style="list-style-type: none"> — Transition/wipe "back to Live": used as transition between recorded scene to Live. — Transition/wipe in-out for slow-motion. — International rights Opener. — Eventual National ski Association Opener 	<p>Other short audiovisual clips that are used to transitions between different segments of the broadcast are generated by Swiss timing</p> <ul style="list-style-type: none"> — Venue presentation + venue presentation openers — Results + standings openers — Top athlete presentation clip.
Free text	<ul style="list-style-type: none"> — For this "on demand" graphics the TV Director assistant and graphic operator can dispose of an already prepared free text list. 	<ul style="list-style-type: none"> — The list is specifying the different option of inserts: top screen, big free text, small free text.
Course maps	<ul style="list-style-type: none"> — FIS is not delivering any virtual 3D course presentation this season. — In the running order the sequence "course presentation" there are alternatives to agree between the HB, Rights holder and FIS — The minimum standard is to display the POV run with sections name and mini 3D track on screen. 	<ul style="list-style-type: none"> — The full version includes a 3D virtual presentation + the POV run with graphics. — As FIS aim to produce 3D virtual course presentation in the future, however, if the HB together with Rights holder want to use a 3D virtual clip this season, it must be valid by all parties (quality and consistency aspects).

5.3 FEEDS & SCRIPTS

FEED & SCRIPTS		
Automatic vs on demand	<ul style="list-style-type: none"> — The TV graphics are generated and injected back to the TV mixer or automatically or on demand from the TV Director, his assistant or the TV graphic operator. — Through the running order 2023-2024 will be precise the graphics “on demand” and the one coming automatically. 	<ul style="list-style-type: none"> — In principle the automatic insert concerns the run of the competitors. — Small adjustments are possible the day before the competition during the TV graphics coordination meeting.
Feeds	<ul style="list-style-type: none"> — In case of a “start” feed set up in Downhill and/or Super G, the HB need to inform latest right after the summer survey that a second graphic feed it required. 	<ul style="list-style-type: none"> — In case of other graphics projects, like caption or AR, FIS together with the HB and Swiss timing will set a technical solution in the TV unit for the processing of such additional graphics; remotely or not.

5.4 UNILATERAL BROADCASTERS KITS

UNILATERAL BROADCASTERS KITS		
KITS	<p>FIS will put at disposal to the unilateral broadcasters via the Rights holder</p> <ul style="list-style-type: none"> — Current TV graphics Catalogue and updates from last season. — Updated running orders. — A list of editorial information: FIS media coordinator in cooperation with the TV director or TV assistant and Swiss Timing, creates a list of editorial information that will be shown during the show. The list of athlete’s Biography + “start” freetext, will be sent before each competition to the RHs Media manager. 	<ul style="list-style-type: none"> — A selection of TV graphics elements to be used in their program. In full coordination with the broadcaster, some TV graphics elements can be share under the condition that the use and combination of uses remain restricted.
Athlete’s photos	<ul style="list-style-type: none"> — FIS has its own photo bank for international signal TV graphics usage. 	<ul style="list-style-type: none"> — Only in agreement with each individual National Ski Association, the photos could be shared with the broadcasters. Conditions and restrictions will be defined between FIS and the Broadcaster.

5.5 MULTILATERAL TV GRAPHICS UPDATES

In addition to the 2022–2023 Alpine TV graphics catalogue, here is the list of updates and new transitions valid for the season 2023–2024:

BUMPER TRANSITION FOR VENUE PRESENTATION



- 8 seconds
- Free text 1= **line 1:** AUDI FIS SKI WORLD CUP / **line 2:** season 2023–2024
- Free text 2= **line 1:** (“venue name”) / **line 2:** (“nation flag”)–(“3 letters nation”)
- Free text 3= **line 1:** (“gender”) / **line 2:** (“event”)

preview: [use the link](#)

pw: TVGRAPHICS

https://fiski-my.sharepoint.com/:v/g/personal/couder_fis-ski_com/EeAePxQ3KhJAoiRIXimshB0B04jPYEii691McESKTwElpQ?nav=eyJyZWZlcnJhbEluZm8iOnsicmVmZXJyYWxBcHAiOiJPbmVEcmI2ZUZvckJ1c2luZXNzIiwicmVmZXJyYWxBcHBQbGF0Zm9ybSI6IldlYiIsInJlZmVycmFsTW9kZSI6InZpZXciLCJyZWZlcnJhbFZpZXCiOiJNeUZpbGVzTGlua0RpcmVjdCJ9fQ&e=muln7T

BUMPER TRANSITION FOR COURSE PRESENTATION



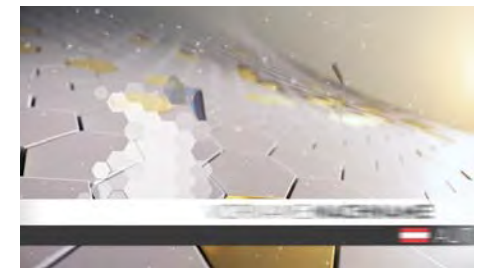
- 8 seconds
- Free text 1= **line 1:** AUDI FIS SKI WORLD CUP / **line 2:** season 2023–2024
- Free text 2= **line 1:** (“venue name”) / **line 2:** (“nation flag”)–(“3 letters nation”)
- Free text 3= **line 1:** (“course’s name”) / **line 2:** (“event”)

preview: [use the link](#)

pw: TVGRAPHICS

https://fisski-my.sharepoint.com/:v/g/person/couder_fis-ski_com/EY3SOS89re9PIIiNoLSvNIwEBc7c-IEN9rH9Ho2VYEb81yw?nav=eyJyZWZlcnJhbEluZm8iOnsicmVmZXJyYWxBcHAiOiJPbmVEcmI2ZUZvckJ1c2luZXNzIiwicmVmZXJyYWxBcHBQbGF0Zm9ybSI6IldlYilsInJlZmVycmFsTW9kZSI6InZpZXciLCJyZWZlcnJhbFZpZXciOiJNeUZpbGVzTGlua0RpcmVjdCJ9fQ&e=Oryh3F

TOP 10 ATHLETES PRESENTATION



- 40 seconds
- 1 bumper for the title
- 10 bumpers combined with 10 inserts of animated pictured, competition bibs and athlete's name and nation.

preview of a mock-up: [use the link](https://fiski-my.sharepoint.com/:v/g/personal/couder_fis-ski_com/EZJPiyq3VP1MmlmbFU3UTIBpDtF36YIUINnaCR8VBr33g?nav=eyJyZWZlcnJhbE-luZm8iOnsicmVmZXJyYWxBcHAiOiJpbmVEcmI2ZUZvckJ1c2luZXNzliwicmVmZXJyYWxBcHBQbGF0Zm9ybSI6IldlYiIsInJlZmVycmFsdW9kZSI6InZpZXciLC-JyZWZlcnJhbFZpZXciOiJNeUZpbGVzTGlua0RpcmVjdCJ9fQ&e=HrifpG)

pw: TVGRAPHICS

https://fiski-my.sharepoint.com/:v/g/personal/couder_fis-ski_com/EZJPiyq3VP1MmlmbFU3UTIBpDtF36YIUINnaCR8VBr33g?nav=eyJyZWZlcnJhbE-luZm8iOnsicmVmZXJyYWxBcHAiOiJpbmVEcmI2ZUZvckJ1c2luZXNzliwicmVmZXJyYWxBcHBQbGF0Zm9ybSI6IldlYiIsInJlZmVycmFsdW9kZSI6InZpZXciLC-JyZWZlcnJhbFZpZXciOiJNeUZpbGVzTGlua0RpcmVjdCJ9fQ&e=HrifpG

ATHLETE BIO



- insert of animated photo
- better visibility of the data

MINISTANDING



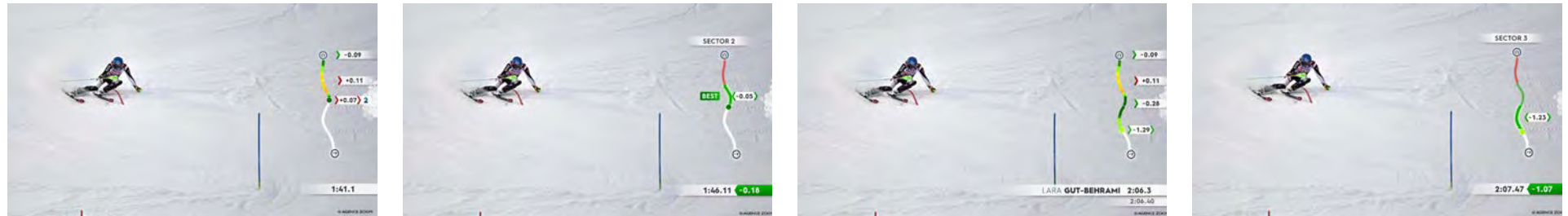
- permanent insert of the leader
- unique standing format to be used during the competition

EVENTS INFORMATION



— insert of event's data in the existing graphics "next at start" and "standings"

LIVE TIMING IN GS

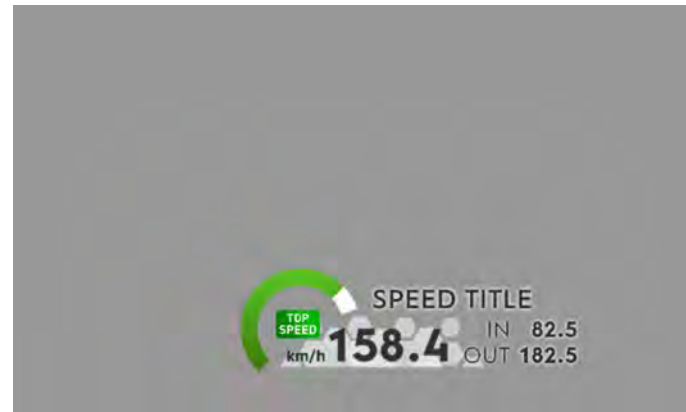


- removal of the horizontal bar with standing
- insert of the standing nearby the time gap
- work on contrast for better visibility of sectors

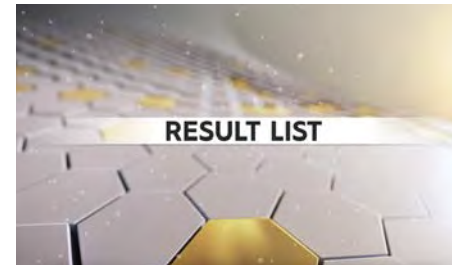
SPEED



- limitation to 2 data
- sizing down
- review of the "Speed In & Speed Out" layout.



PODIUM AND STANDINGS



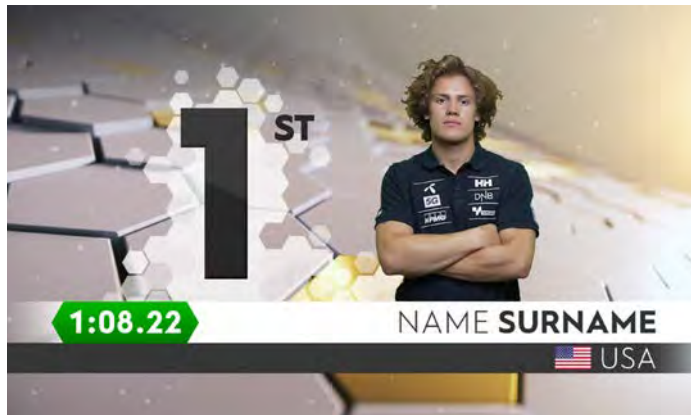
- 1 bumper for the title
- new podium presentation (mock-up with tie case attached)
- 1 transition bumper with title to results list
- Results list opens with animated photo (mock-up attached)

preview of a mock-up: [use the link](https://fiski-my.sharepoint.com/:v/g/person/couder_fis-ski_com/EezzGsJgGWtBIVfdbKpx4pYBxGP8zOL15K8Eb-lpKjX1MA?nav=eyJyZWZlcnJhbE-luZm8iOnsicmVmZXJyYWxBcHAiOiJpbmVEcmI2ZUZvckJ1c2luZXNzliwicmVmZXJyYWxBcHBQbGF0Zm9ybSI6IldiYiIsInJlZmVycmF0Zm9kZSI6InZpZXciLC-JyZWZlcnJhbFZpZXciOiJNeUZpbGVzTGlua0RpcmVjdCJ9fQ&e=m2SF06)

pw: TVGRAPHICS

https://fiski-my.sharepoint.com/:v/g/person/couder_fis-ski_com/EezzGsJgGWtBIVfdbKpx4pYBxGP8zOL15K8Eb-lpKjX1MA?nav=eyJyZWZlcnJhbE-luZm8iOnsicmVmZXJyYWxBcHAiOiJpbmVEcmI2ZUZvckJ1c2luZXNzliwicmVmZXJyYWxBcHBQbGF0Zm9ybSI6IldiYiIsInJlZmVycmF0Zm9kZSI6InZpZXciLC-JyZWZlcnJhbFZpZXciOiJNeUZpbGVzTGlua0RpcmVjdCJ9fQ&e=m2SF06

LAST 8 (RUN 2)



- 40 seconds max. (can be shorten up few seconds)
- 1 bumper for the title
- 10 bumpers combined with 10 inserts of animated pictured, gap at 2nd run start, and athlete's name and nation.
- similar animation than "TOP10 athletes presentation"

CUP LEADER



- 3 seconds bumper to present the Cup leader or other title
- adjustment on text possible (ex: Last Overall winner')

preview of a mock-up: [use the link](https://fisski-my.sharepoint.com/:v:/g/personal/couder_fis-ski_com/EdqnCJ1JGrxNqjscr8ysD8IBv1WziSHaHMVW0fBGFolGuA?nav=eyJyZWZlcnJhbEluZm8iOnsicmVmZXJyYWxBcHAiOiJpbmVlcmI2ZUZvckJ1c2luZXNzliwicmVmZXJyYWxBcHBQbGF0Zm9ybSI6IldlYiIsInJlZmVycmFsTW9kZSI6InZpZXCiLCJyZWZlcnJhbFZpZXCiOiJNeUZpbGVzTGlua0RpcmVjdCJ9fQ&e=WxhB4B)

pw: TVGRAPHICS

https://fisski-my.sharepoint.com/:v:/g/personal/couder_fis-ski_com/EdqnCJ1JGrxNqjscr8ysD8IBv1WziSHaHMVW0fBGFolGuA?nav=eyJyZWZlcnJhbEluZm8iOnsicmVmZXJyYWxBcHAiOiJpbmVlcmI2ZUZvckJ1c2luZXNzliwicmVmZXJyYWxBcHBQbGF0Zm9ybSI6IldlYiIsInJlZmVycmFsTW9kZSI6InZpZXCiLCJyZWZlcnJhbFZpZXCiOiJNeUZpbGVzTGlua0RpcmVjdCJ9fQ&e=WxhB4B



6. INFORMATION SERVICES

6.1 SOCIAL MEDIA



Instagram

<https://instagram.com/fisalpine?igshid=MzMyNGUyNmU2YQ==>



Facebook

<https://www.facebook.com/fisalpine>



X (Twitter)

<https://x.com/fisalpine?s=21&t=KuyfFTvzemBp7AQg3ZsP2w>



YouTube

<https://youtube.com/@FISAlpine?si=Af16RzGFDpr-oNx>



TikTok:

https://www.tiktok.com/@fis.ski?t=8fPIS0aDZJZ&_r=1

6.2 FIS INFORMATION

Alpine World Cup Broadcast report

https://assets.fis-ski.com/image/upload/fis-prod/assets/FIS_Alpine_Skiing_World_Cup_Report_2022-23_short.pdf

Media coordinator portal

<https://www.fis-ski.com/en/alpine-skiing/media-information>

- Contacts
- Registration to Telegram Media Information group
- Access to press conferences audios.
- Up-to-date event-by-event statistics with individual Competition fact sheets
- World cup venue media templates
- LOCs resources: Media service Guidelines, Photographer Priority List, on course photographer rules, on course waiver.
- Sign up for FIS Official communications.

Statistics

<https://www.fis-ski.com/DB/general/statistics.html?sectorcode=AL>

FIS TV

<https://watch.fis-ski.com/home>

FIS App

<https://www.fis-ski.com/en/international-ski-federation/fis-app>

FIS Live results

<https://www.fis-ski.com/DB/general/live.html>

FIS style guide

https://assets.fis-ski.com/image/upload/v1662740334/fis-prod/assets/FIS_Style_Guide.pdf





7. CONTACT



**INTERNATIONAL
SKI AND SNOWBOARD
FEDERATION**

Blochstrasse 2
CH-3653 Oberhofen am Thunersee
Switzerland

Phone: +41 33 244 6161
E-mail: couder@fis-ski.com
Website: fis-ski.com